



Correction to: An application of dynamic programming to local adaptation decision-making

Veruska Muccione^{1,2} · Thomas Lontzek³ · Christian Huggel¹ · Philipp Ott⁴ · Nadine Salzmann^{5,6}

Published online: 28 November 2023
© Springer Nature B.V. 2023

Correction to: Natural Hazards

<https://doi.org/10.1007/s11069-023-06135-2>

Unfortunately in the original online version of this article's Figs. 1 and 2 were inadvertently shuffled during production process. The updated figures have been fixed with this correction.

The original article has been corrected.

The original article can be found online at <https://doi.org/10.1007/s11069-023-06135-2>.

✉ Veruska Muccione
veruska.muccione@geo.uzh.ch

¹ Department of Geography, University of Zurich, Zurich, Switzerland

² Institute of Environmental Sciences, University of Geneva, Geneva, Switzerland

³ School of Business and Economics, RWTH Aachen University, Aachen, Germany

⁴ Department of Quantitative Business Administration, University of Zurich, Zurich, Switzerland

⁵ WSL: Institute for Snow and Avalanche Research SLF, Davos Dorf, Switzerland

⁶ Climate Change, Extremes, and Natural Hazards in Alpine Regions Research Center CERC, Davos Dorf, Switzerland

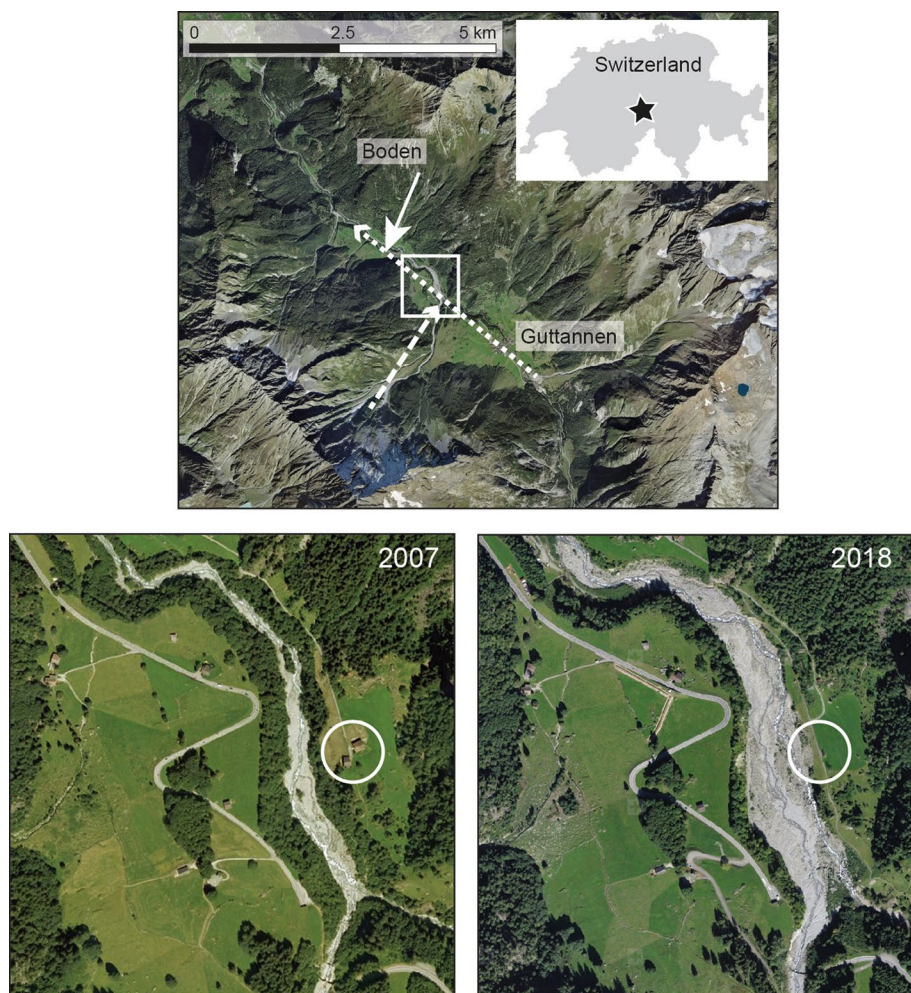


Fig. 1 The study area of Guttannen in the Grimsel valley. Top panel: the short, dashed arrow represents the debris flow trajectory, the long-dotted arrow the floods in the Aare river. The community center of Guttannen and the residential area of Boden are indicated. The white rectangle indicates the location of the two close-up images in the bottom panel. Image source: Swiss Federal Office of Topography swisstopo. Bottom panels: Close-up of parts of the flood area. Debris flows enter the Aare river channel from bottom left of the image and have deposited massive sediment in the riverbed over the past years, which can be easily recognized in a comparison of the two images (2007 representing conditions before the debris flow activity started). The white circle indicates the location of a building which was dismantled due to risk of flooding and people were relocated. Image sources: left: Flotron Perrin Jacquet, 2007; right: Swiss Federal Office of Topography swisstopo, 11/09/2018

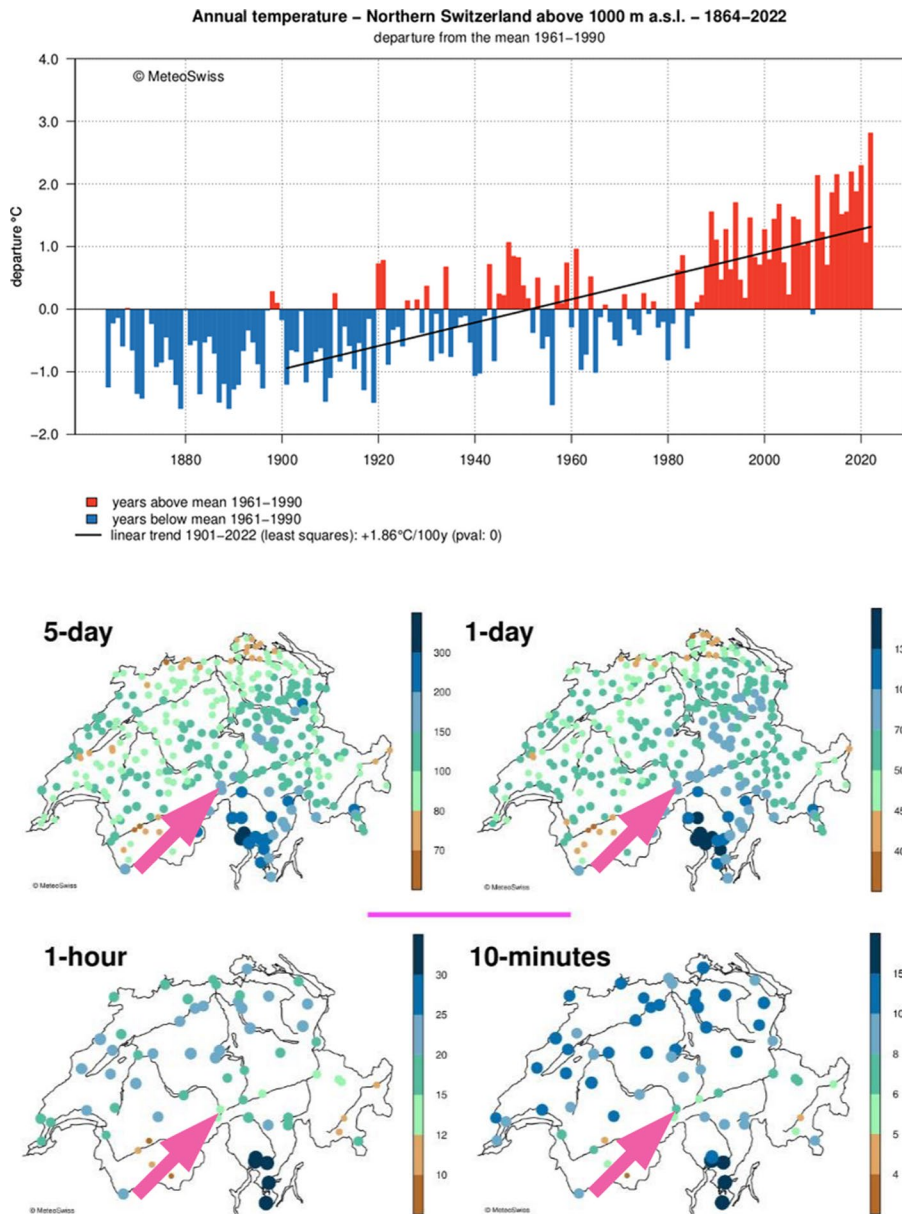


Fig. 2 (Top) Annual temperature anomalies from 1961–1990 for Northern Switzerland Alpine regions to which Guttannen and the Grimsel area belong. (Bottom) Mean annual maxima in mm of 5-day and 1-day precipitation (on the top row) and 1-h and 10-min (on the bottom row). Both figures are generated using data and tools available directly on the MeteoSwiss website and are from MeteoSwiss (CH2018 2018). The magenta arrow indicates the approximate location of measurement stations at Guttannen and Grimsel Ospice

Open Access This article is licensed under a Creative Commons Attribution 4.0 International License, which permits use, sharing, adaptation, distribution and reproduction in any medium or format, as long as you give appropriate credit to the original author(s) and the source, provide a link to the Creative Commons licence, and indicate if changes were made. The images or other third party material in this article are included in the article's Creative Commons licence, unless indicated otherwise in a credit line to the material. If material is not included in the article's Creative Commons licence and your intended use is not permitted by statutory regulation or exceeds the permitted use, you will need to obtain permission directly from the copyright holder. To view a copy of this licence, visit <http://creativecommons.org/licenses/by/4.0/>.

Publisher's Note Springer Nature remains neutral with regard to jurisdictional claims in published maps and institutional affiliations.