

ARTICLE

Received 15 Feb 2016 | Accepted 24 Aug 2016 | Published 29 Sep 2016

DOI: 10.1038/ncomms12993

OPEN

ICER is requisite for Th17 differentiation

Nobuya Yoshida¹, Denis Comte^{1,2}, Masayuki Mizui¹, Kotaro Otomo¹, Florencia Rosetti³, Tanya N. Mayadas³, José C. Crispín¹, Sean J. Bradley¹, Tomohiro Koga¹, Michihito Kono¹, Maria P. Karampetsou¹, Vasileios C. Kytтарis¹, Klaus Tenbrock⁴ & George C. Tsokos¹

Inducible cAMP early repressor (ICER) has been described as a transcriptional repressor isoform of the cAMP response element modulator (CREM). Here we report that ICER is predominantly expressed in Th17 cells through the IL-6-STAT3 pathway and binds to the *Il17a* promoter, where it facilitates the accumulation of the canonical enhancer ROR γ t. *In vitro* differentiation from naive ICER/CREM-deficient CD4⁺ T cells to Th17 cells is impaired but can be rescued by forced overexpression of ICER. Consistent with a role of Th17 cells in autoimmune and inflammatory diseases, ICER/CREM-deficient B6.*lpr* mice are protected from developing autoimmunity. Similarly, both anti-glomerular basement membrane-induced glomerulonephritis and experimental encephalomyelitis are attenuated in ICER/CREM-deficient mice compared with their ICER/CREM-sufficient littermates. Importantly, we find ICER overexpressed in CD4⁺ T cells from patients with systemic lupus erythematosus. Collectively, our findings identify a unique role for ICER, which affects both organ-specific and systemic autoimmunity in a Th17-dependent manner.

¹Division of Rheumatology, Beth Israel Deaconess Medical Center, Harvard Medical School, Boston, Massachusetts 02215, USA. ²Division of Immunology and Allergy, Centre Hospitalier Universitaire Vaudois, 1011 Lausanne, Switzerland. ³Center for Excellence in Vascular Biology, Department of Pathology, Brigham and Women's Hospital, Harvard Medical School, Boston, Massachusetts 02215, USA. ⁴Department of Pediatrics, Division of Allergy and Immunology, RWTH University of Aachen, 52056 Aachen, Germany. Correspondence and requests for materials should be addressed to N.Y. (email: nyoshida@bidmc.harvard.edu) or to G.C.T. (email: gtsokos@bidmc.harvard.edu).

The role of cAMP-response element modulator (CREM) in T-cell differentiation is complex and not completely understood. CREM has many alternatively spliced transcript variants, and their relative expression affects T-cell differentiation. A relationship between CREM and Th17 cells has been proposed¹. Genome-wide analyses of Th17 transcription regulatory network revealed the induction of CREM among other genes, and silencing of *CREM* was associated with reduced Th17 differentiation².

Numerous reports have claimed that interleukin (IL)-17 has an important role in the pathogenesis of autoimmune diseases, including systemic lupus erythematosus (SLE)^{1,3–5}. Expression of CREM α , a repressor isoform of CREM, is increased in CD4⁺ T cells from SLE patients, and forced expression of CREM α in human T cells enhances IL-17A expression⁶. Moreover, mice overexpressing CREM α in T cells display increased IL-17 production and severe skin inflammation, as well as mild lupus-like disease⁷.

Inducible cAMP early repressor (ICER) is a splice variant of CREM⁸. In contrast to other isoforms of *CREM*, *ICER* has an alternative transcription initiation site and is induced by a unique alternative promoter (P2)⁹. Because *ICER* has no transcriptional activation domains, it functions as a powerful repressor of cAMP-induced CRE-mediated transcription. Previous papers have shown that *ICER* inhibits T-cell activation, Th1/Th2 cell differentiation and suppresses the production of proinflammatory cytokines^{10,11}; however, whether *ICER* is involved in the generation of Th17 cells is not known.

Here we demonstrate that *ICER* is the predominant CREM isoform expressed in Th17 cells in both mice and humans. *ICER* is induced by IL-6 via STAT3 signalling and enhances ROR γ t accumulation on the *Il17a* promoter. Mice deficient in *ICER/CREM* develop less anti-glomerular basement membrane-induced glomerulonephritis (AIGN) and experimental encephalomyelitis (EAE), and B6.*lpr* *ICER/CREM*-deficient mice develop less autoimmunity and lupus nephritis. The relevance of these new findings in human disease is underscored by the increased expression of *ICER* in T cells from SLE patients. Overall, *ICER* controls organ-specific and systemic autoimmunity by controlling IL-17 production.

Results

ICER is induced in Th17-polarized murine CD4 T cells. To further understand the role of CREM in Th17 differentiation, we asked which CREM isoforms are expressed during *in vitro* Th17-polarizing conditions. Using western blotting we investigated the expression of CREM isoform induction in *ICER/CREM*-sufficient and -deficient T cells cultured under Th17-polarizing conditions. We noted a <20 kDa CREM band to be induced by day 3 (Fig. 1a, left) in *ICER/CREM*-sufficient but not in *ICER/CREM*-deficient T cells (Fig. 1a, right first and second lanes) pointing that this band was an isoform of CREM. Because the size of the detected CREM was <20 kDa, we assumed that it represented *ICER*. Because CREM has various isoforms and it is impossible to identify specific isoform(s) by conventional mass spectrometry, we generated plasmids that overexpress each of the two typical *ICER* isoforms, that is, *ICER* and *ICER* γ . When we transfected these plasmids into HEK-293T cells and compared the size of those molecules with the <20 kDa CREM, both overexpressed *ICER* bands (majority *ICER* γ) fit perfectly to the <20 kDa CREM (Fig. 1a, right). We conclude that the <20 kDa CREM induced in Th17 cells is an isoform of *ICER* γ or perhaps *ICER*.

Next we polarized T cells under Th17, Th1, Th2 and Treg conditions, and we noted that *ICER* was present in significant

amounts only when cells were driven towards Th17 rather than any of the other three conditions (Fig. 1b). To confirm that *ICER* is induced under Th17 conditions, we cultured T cells from B6.IL-17^{GFP} mice under the same Th17 culture conditions and sorted green fluorescent protein (GFP)-positive (IL-17A producing) and GFP-negative (IL-17A non-producing) cells. As seen in Fig. 1c, *ICER* is expressed primarily by IL-17A-producing cells and not by non-IL-17A-producing cells (Fig. 1c). We asked whether IL-17A-producing T cells from MRL/*lpr* mice before *in vitro* polarization also express *ICER* as a result of ongoing stimulation *in vivo*. Indeed, as shown in Fig. 1d, IL-17A-producing T cells from MRL/*lpr* mice expressed more *ICER* than naive CD4 MRL/Mpj mice.

ICER/CREM deficiency reduces *in vitro* Th17 differentiation.

Although *ICER* is known to affect Th1 and Th2 *in vitro* polarization, it remains unclear how *ICER/CREM* deficiency contributes to Th17 and Treg differentiation. We assessed the impact of *ICER* expression in T cells cultured *in vitro* under Th1, Th2, Th17 and Treg polarized conditions. As shown in Fig. 2a, IL-17A-producing cells were reduced in Th17-polarized cells from *ICER/CREM*-deficient compared with those from *ICER/CREM*-sufficient cells, yet, we could not see any significant differences in T cells cultured under other polarizing conditions. We determined the expression of each master transcription factor, *Gata3*, *Tbet*, *Rorc* and *Foxp3* in T cells cultured under Th1, Th2, Th17 and Treg, respectively. We did not find any differences in the expression of *Tbet* and *Foxp3* but we found increased expression of *Gata3* and decreased *Rorc* gene expression in *ICER/CREM*-deficient mice (Fig. 2b). These data are in agreement with a previous report according to which *ICER/CREM*-deficient T cells tend to differentiate towards Th2 more than *ICER/CREM*-sufficient T cells^{11,12}. Decreased numbers of IL-17A-producing cells among Th17-polarized *ICER/CREM*-deficient T cells were conserved when several IL-6 concentrations were used (Fig. 2c). When we measured the expression of Th17-related genes, *ICER/CREM*-deficient T cells displayed less *Il23r*, *Il17a* and *Il17f* expression (Fig. 2d).

To prove further the role of *ICER* in Th17 differentiation we transfected *ICER/CREM*-deficient T cells with *ICER* and *ICER* γ expression vectors and polarized them under Th17 conditions. As seen in Fig. 2g, transfection of either of the *ICER* isoforms resulted in increased IL-17 GFP⁺ T-cell induction relative to those that received empty plasmid, providing further support that *ICER* promotes Th17 differentiation. Taken together, these data indicate that *ICER/CREM* promotes Th17 differentiation, whereas it inhibits Th2 differentiation and does not affect Th1 and Treg differentiation.

ICER is induced by IL-6 through STAT3 signalling. Combination of IL-6 and transforming growth factor beta (TGF β) can differentiate T cells into Th17 cells, where transduction of IL-6 receptor activity occurs through STAT3 and that of TGF β through SMAD3 (refs 4,13). To address the relative impact of these stimuli we added to anti-CD3 and anti-CD28 Ab-stimulated T cells IL-6, TGF β , or IL-6 and TGF β . *ICER* was induced only if IL-6 was present in the culture (Fig. 3a). This finding was confirmed by blocking IL-6 or TGF β signal transduction by adding STAT3 or SMAD3 inhibitors in T cells cultured under polarizing conditions. The presence of STAT3 inhibitor inhibited the induction of *ICER* in a dose-dependent manner while the presence of a SMAD3 inhibitor had no effect (Fig. 3b). Furthermore, when we cultured naive CD4⁺ T cells from CD4^{cre+} STAT3^{fl/fl} mice under Th17-polarizing conditions we could not

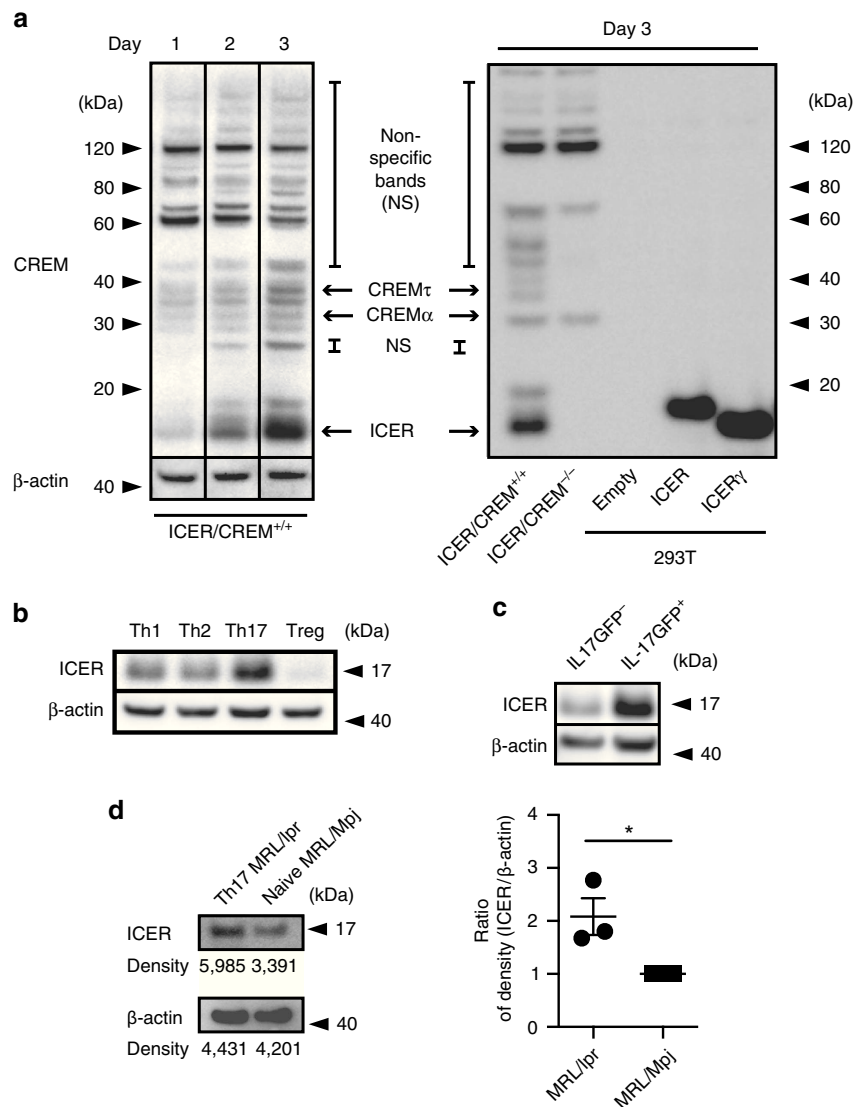


Figure 1 | ICER is expressed in IL-17-producing murine T cells. (a, left) CREM and β -actin expression in Th17-polarized ICER/CREM^{+/+} murine CD4⁺ T cells was measured by western blotting at the indicated time points. (a, right) CREM expression on day 3 in Th17-polarized ICER/CREM^{+/+} murine CD4⁺ T cells (right, far left), Th17-polarized B6.ICER/CREM^{-/-} mice CD4⁺ T cells (right, second left), empty plasmid transfected HEK-293T cells (right, third left), ICER-overexpressing plasmid-transfected HEK-293T cells (right, third right) or ICER γ -overexpressing plasmid-transfected HEK-293T cells (right, second right) was measured by western blotting. Data are representative of four experiments. (b) ICER/CREM and β -actin expression on day 3 of Th0-, Th1-, Th17- and Treg-polarized ICER/CREM^{+/+} mice CD4⁺ T cells was measured by western blotting. Data are representative of three experiments. (c) ICER/CREM and β -actin expression of FACS-sorted GFP⁺ (IL-17A-producing cells) or GFP⁻ (IL-17A-non-producing cells) in Th17-polarized B6. IL-17A GFP ICER/CREM^{+/+} CD4⁺ T cells on day 3 were measured by western blotting. Data are representative of three experiments. (d) ICER and β -actin expression of FACS-sorted IL-17A-producing cells from 18-week-old MRL/lpr mice or naive CD4 T cells from 18-week-old MRL/MpJ control mice was determined by western blotting. A representative (of three) blot is shown (left) and densitometric readings from three experiments are shown on the right (* P < 0.05; mean \pm s.e.m., n = 4). See Supplementary Fig. 1 for uncropped scans of the western blot.

detect any ICER induction proving the importance of STAT3 signalling in the induction of ICER.

To follow-up on this data, we searched for defined STAT3-binding sites in the ICER/CREM gene. Within the 91 kbp sequence (chr18: 3,251,045–3,342,901) spanning –15 kbp upstream to +5.2 kb downstream from the ICER/CREM locus (MGI: 88495) one putative STAT3-binding sequence (BS1: +586/+594, 3'-TTCCTGGAA-5' from the ICER transcription start site) was identified by using the match module of gene regulation (<http://www.gene-regulation.com>). To investigate whether STAT3 regulates ICER expression at the transcriptional level we cloned the ICER promoter into a

luciferase reporter system. This promoter region includes a CRE-binding site in the p2 promoter (–116/–53), two putative CRE-binding sites (+573/+580; +639/+646) and a putative STAT3-binding site (+586/+594) in the first intron (Fig. 3d). As shown in Fig. 3e, the cloned promoter region that defines the STAT3-binding site possessed significantly increased transcriptional activity when the cells were cultured under Th17-polarizing conditions compared with Th0-non-polarized conditions. This activity was completely abrogated in cells transfected with a mutated STAT3 site-mutated promoter (Δ +586) (Fig. 3d,e), indicating that IL-6 induces ICER expression directly through STAT3 signal transduction.

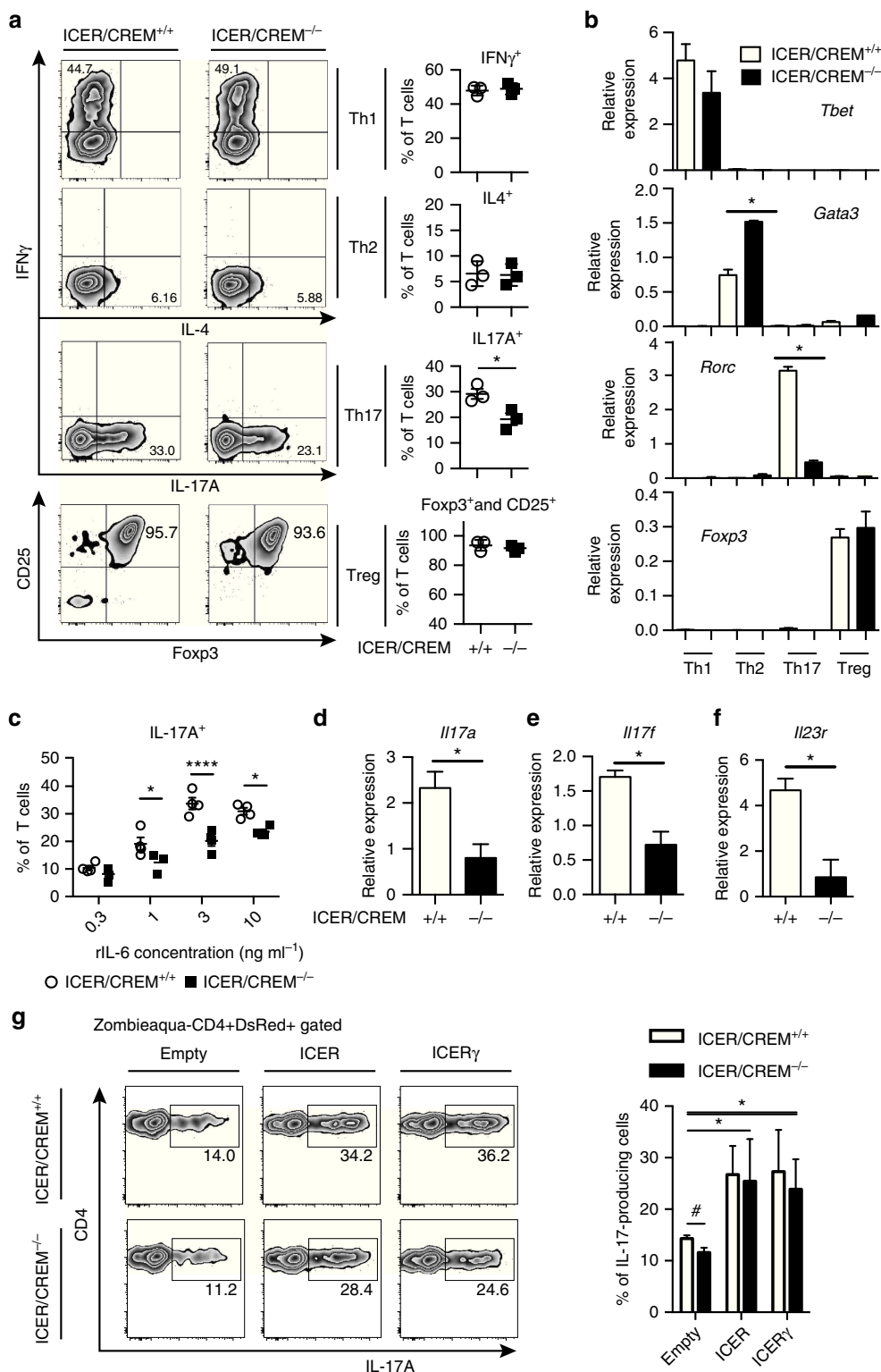


Figure 2 | Compromised Th17 cell differentiation in ICER/CREM^{-/-} mice. Naive CD4⁺ T cells from B6.ICER/CREM^{+/+} mice or B6.ICER/CREM^{-/-} mice were polarized for 3 days as indicated condition. **(a)** Representative flow plots of intracellular expressions of IFN γ or IL-4 and IL-17A (left), the percentages of cells (right) and polarized in indicated condition were measured by flow cytometry (* P <0.05; mean \pm s.e.m., n = 3). See Supplementary Fig. 2A for FACS gating strategy. **(b)** Real-time PCR analysis of indicated gene expressions in those differentiated cells, relative to β -actin (n = 3) (* P <0.05; mean \pm s.e.m., n = 3). **(c)** The percentage of IL-17-producing cells in Th17-polarized T cells with different concentrations of IL-6. Cumulative results of four independent experiments are shown (**** P <0.0001, * P <0.05; mean \pm s.e.m., two-way analysis of variance (ANOVA)). **(d-f)** Real-time PCR analysis of **(d)** *Il17a*, **(e)** *Il17f* and **(f)** *Il23r* in Th17-polarized T cells on day 3. A profile representative of three mice is shown (* P <0.05; mean \pm s.e.m., n = 3). **(g)** Empty vector (Empty), ICER-expressing (ICER) or ICER γ -expressing (ICER γ) plasmids were transfected to Th17-polarized T cells from indicated strains of IL-17A reporter mice on day1, and the percentage of IL-17-producing cells was measured by flow cytometry. A profile representative of three mice is shown on the right (* P <0.05; mean \pm s.e.m., two-way ANOVA, Bonferroni, # P <0.05 two-tailed t -test, n = 3). See Supplementary Fig. 2B for FACS gating strategy.

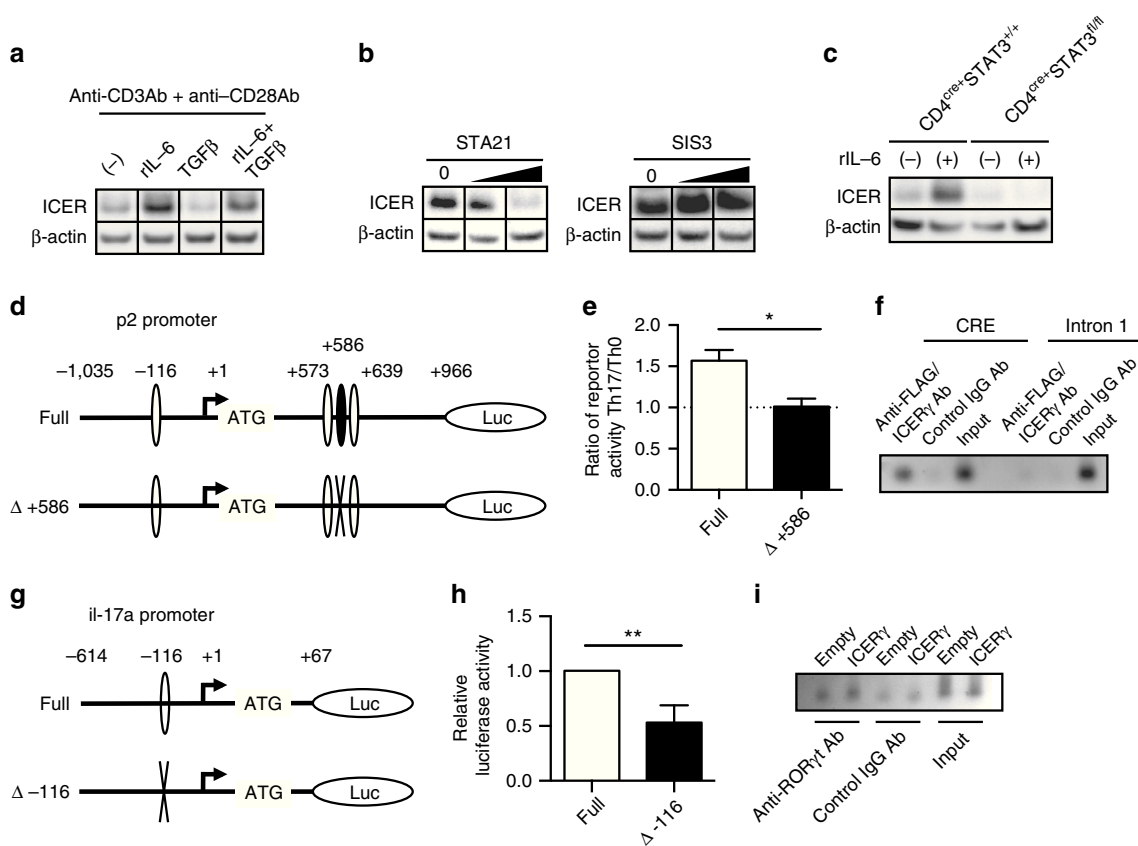


Figure 3 | ICER is induced by IL-6 via STAT3 and, binds to the IL-17A promoter. (a–c) CREM and β -actin expression in (a) B6 naive $CD4^+$ T cells cultured in the presence of indicated stimulations on day2, (b) Th17-polarized B6 naive $CD4^+$ T cells cultured in the presence of STAT3 inhibitor (STA21; 0, 10 and $30 \mu\text{M}$) or SMAD3 inhibitor (SIS3; 0, 1 and $3 \mu\text{M}$) on day3, and (c) Th17-polarized naive $CD4^+$ T cells from indicated strains in the presence or absence of rIL-6 on day3 was measured by western blotting. Data are representative of 3–4 experiments. (d,g) Schematic representations of (d) CRE (–116/–53, +573/+580 and +639/+646) and of Stat3-binding site (+586/+594) on the p2 ICER promoter, and (g) CRE (–116/–109) on the IL-17a promoter are shown. (e) The full-length ICER promoter region (Full) or a version containing the STAT3-binding site-directed mutation (Δ +586) were transfected to Th17-polarized or Th0-polarized cells. The ratio of reporter activities in those Th17-polarized cells on those Th0-polarized cells was shown ($*P < 0.05$; mean \pm s.e.m.; $n = 3$). (f,i) Binding of (f) FLAG/ICER γ to the CRE or (i) ROR γ t to the ROR-binding element in Th17-polarized $CD4^+$ T cells from ICER/CREM $^{-/-}$ mice after indicated vector transfection. A comparison to the binding of control Rabbit IgG Ab and sample input. Data are representative of three experiments. For f, the first intron of ICER was used as a negative control for ChIP enrichment. (h) IL-17a promoter activity of Th17-polarized ICER/CREM $^{-/-}$ naive $CD4^+$ T cells was shown. Either full-length mouse IL-17a promoter or a version containing the CRE site-directed mutation (Δ -116) were transfected ($**P < 0.01$; mean \pm s.e.m.; $n = 3$). See Supplementary Fig. 3 for uncropped scans of the western blot.

ICER enhances ROR γ t accumulation. Because previously we had shown that CREM α , which is a suppressive isoform of CREM, bound directly to human IL-17A promoter and increased human IL-17A promoter activity¹⁴, we considered that ICER could affect similarly *Il17a* promoter activity. To this end we generated FLAG-tagged ICER-overexpressing plasmids (FLAG-ICER and FLAG-ICER γ) and transfected them into ICER/CREM-deficient T cells, which we polarized under Th17 conditions. Transfection of either of the ICER isoforms resulted in increased IL-17 GFP $^+$ T-cell induction compared with those that received empty plasmid (Supplementary Fig. 2). Furthermore, as shown in Fig. 3f, ICER accumulated at the *Il17a* promoter region. The promoter activity of IL-17A decreased after disruption of the CRE-binding site (–116/–109) in the IL-17A promoter, suggesting the importance of this site in the *il-17A* gene transcription (Fig. 3g,h). Finally, we asked whether ICER binding influenced ROR γ t accumulation at the ROR-binding element (–116/–111). We found that ROR γ t accumulation at the ROR-binding element was increased when we introduced ICER γ -overexpressing vector compared with empty vector (Fig. 3i). Collectively, in the process of Th17 cell

differentiation *in vitro*, ICER is induced by IL-6 through a STAT3 signalling pathway, binds directly to the CRE-binding site of the IL-17A promoter and enriches ROR γ t accumulation at the ROR-binding element.

ICER/CREM deficiency limits AIGN in mice. Given that ICER/CREM deficiency had greatly impacted on *in vitro* Th17 cell differentiation, we proceeded to evaluate the relevance of ICER/CREM expression in IL-17-dependent inflammatory conditions. Because the development of kidney damage in AIGN depends on Th17 cells, and IL-17 determines the severity of this induced disease^{13,15}, we induced AIGN disease in 9- to 11-week-old male ICER/CREM-deficient and -sufficient mice. As shown in Fig. 4a,b, histological sections from ICER/CREM-deficient mice showed less glomerulonephritis, tubulointerstitial inflammation, vasculitis and less protein cast formation compared with those in ICER/CREM-sufficient mice. Accordingly, a significant reduction in proteinuria was observed in ICER/CREM-deficient mice compared with wild-type counterparts (Fig. 4c). Furthermore, when we examined cell infiltration in the diseased kidney, ICER/

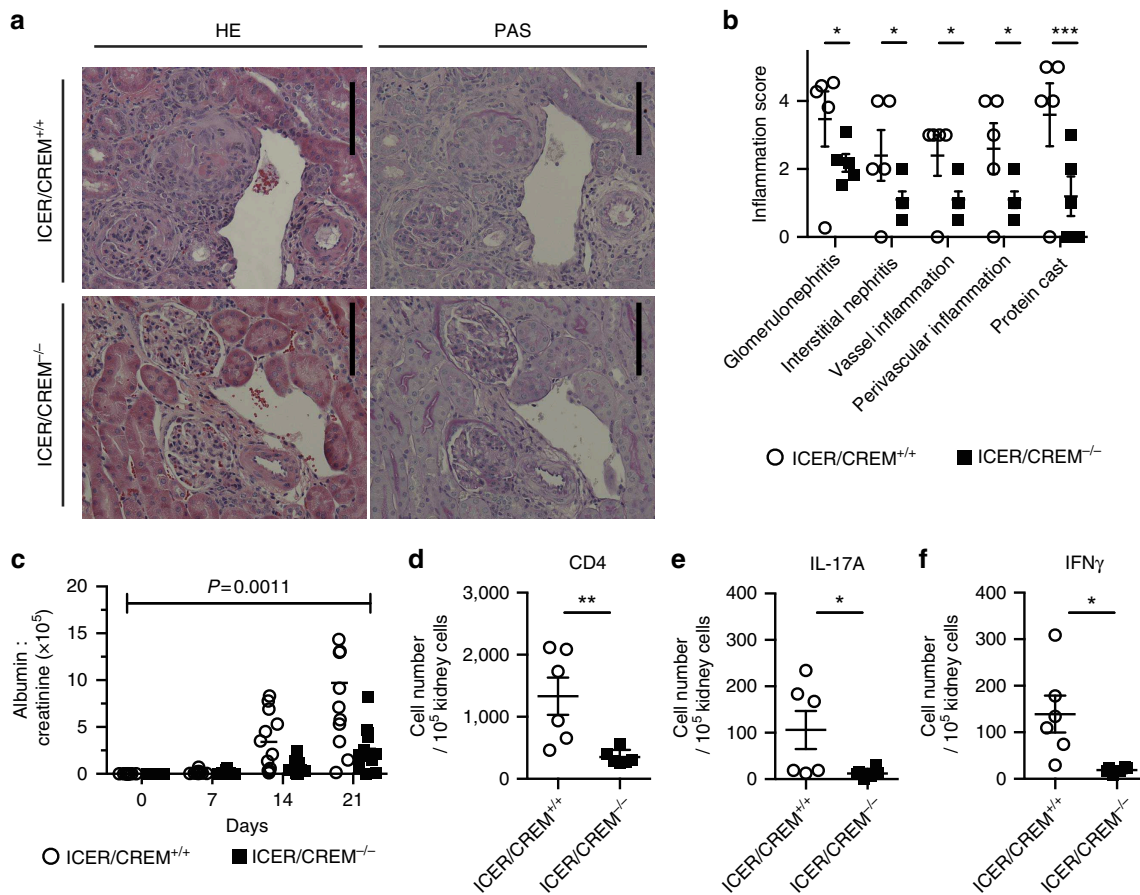


Figure 4 | ICER/CREM^{-/-} mice are resistant to AIGN. Mice were immunized with rabbit IgG in complete Freund's adjuvant (CFA) (day -3) and then injected intravenously with 200 μ l of rabbit nephrotoxic serum (day 0). **(a)** Representative images of haematoxylin and eosin (left) and Periodic acid-Schiff (PAS) (right)-stained sections of kidneys collected by day 21 are shown. Scale bar, 50 μ m. **(b)** Inflammation scores of kidney are shown ($*P < 0.05$, $***P < 0.001$; mean \pm s.e.m.; two-way analysis of variance (ANOVA); $n = 4$). **(c)** Glomerular injury was quantified by proteinuria (urinary albumin normalized to creatinine) at the indicated time points ($P = 0.0011$; mean \pm s.e.m.; two-way repeated measures ANOVA; $n = 12$). **(d-f)** Absolute cell numbers of **(d)** infiltrated CD4⁺ T cells, **(e)** IL-17A-producing CD4⁺ T cells and **(f)** IFN γ -producing CD4⁺ T cells in kidneys collected at day 21 were evaluated by flow cytometry ($*P < 0.05$, $**P < 0.01$; mean \pm s.e.m.; $n = 6$).

CREM-deficient mice had fewer infiltrating CD4⁺ T (CD45⁺CD90.2⁺CD4⁺ cells; Fig. 4d), IL-17A- (CD45⁺CD90.2⁺CD4⁺IL-17A⁺ cells; Fig. 4e) and interferon gamma (IFN γ)- (CD45⁺CD90.2⁺CD4⁺IFN γ ⁺ cells; Fig. 4f) producing cells than ICER/CREM-sufficient mice. Collectively, ICER/CREM deficiency protects against disease progression in a model of AIGN.

ICER/CREM deficiency ameliorates EAE. To further document the role of ICER/CREM in *in vivo* IL-17-dependent pathology, we induced EAE in 9- to 11-week-old ICER/CREM-sufficient and -deficient mice by immunizing them with myelin oligodendrocyte glycoprotein (MOG₃₅₋₅₅). Disease progression in ICER/CREM-deficient mice was remarkably reduced including lower clinical scores and less body weight changes in ICER/CREM-deficient mice compared with wild-type littermates (Fig. 5b,c). Histological sections of spinal cords showed significantly decreased cell infiltration and demyelization in ICER/CREM-deficient mice (Fig. 5a). The reduction of infiltrating cells was confirmed by flow cytometry analysis of T cells extracted from spinal cords of diseased mice. Since the number of infiltrated T cells was reduced in spinal cord of ICER/CREM-deficient mice, the absolute numbers of CD4⁺ (CD45⁺CD90.2⁺CD4⁺; Fig. 5d), IL-17A-

(CD45⁺CD90.2⁺CD4⁺IL-17A⁺; Fig. 5e) and IFN γ -producing cells (CD45⁺CD90.2⁺CD4⁺IFN γ ⁺; Fig. 5f) were reduced in the spinal cords from ICER/CREM-deficient mice as compared with those from the spinal cords from ICER/CREM-sufficient counterparts, which reflects the decreased disease severity of ICER/CREM-deficient mice. To confirm that this difference is IL-17-related, we immunized ICER/CREM-sufficient and -deficient mice with MOG₃₅₋₅₅ and draining lymph nodes were extracted on day 8. Isolated cells from the lymph nodes were further cultured in *ex vivo* with MOG for 3 days. IL-17A/F and IFN γ concentration were measured by enzyme-linked immunosorbent assay. As shown in Fig. 4, IL-17A/F production was decreased in ICER/CREM-deficient mice, whereas IFN γ production was not significantly different (Fig. 5g,h). This further points to the importance of ICER/CREM in the generation of Th17 cells and the production of IL-17.

ICER/CREM deficiency abrogates lupus disease in B6.*lpr* mice. CREM α , another repressor isoform of CREM, when over-expressed in lupus-prone mice leads to increased lupus-like autoimmune disease in a Th17-related manner^{7,16}. Since ICER/CREM deficiency affected Th17 differentiation *in vitro* and in two different Th17-related disease models, we considered that ICER/

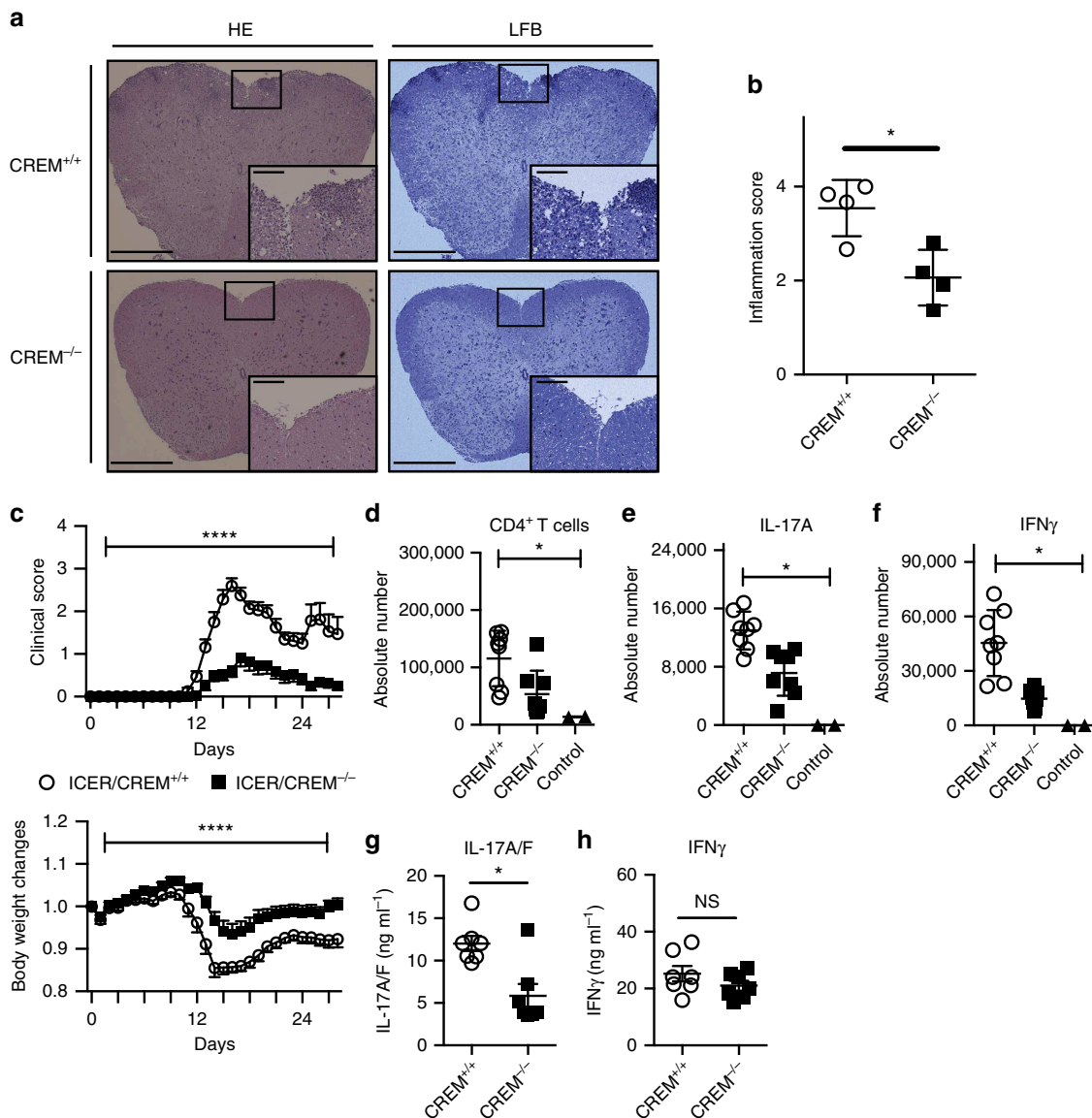


Figure 5 | ICER/CREM^{-/-} mice are resistant to EAE. EAE was induced in ICER/CREM^{+/+} and ICER/CREM^{-/-} mice by immunization with MOG₃₅₋₅₅ emulsified in CFA. **(a)** Spinal cord collected at day 14 from indicated mice were stained with haematoxylin and eosin (left) and luxol fast blue (right) to assess inflammation and myelin content, respectively. Scale bars, 500 or 100 μ m (magnified panels). **(b)** Quantitative cumulative data are shown ($*P < 0.05$; mean \pm s.e.m.; $n = 4$). **(c)** The clinical scores and %body-weight changes were monitored ($****P < 0.0001$; mean \pm s.e.m.; two-way analysis of variance (ANOVA); cumulative results of three independent experiments, $n = 5, 5$ and 6). **(d-f)** Absolute cell numbers of spinal cord-infiltrated **(d)** CD4⁺ T cells, **(e)** IL-17A-producing CD4⁺ T cells and **(f)** IFN γ -producing CD4⁺ T cells from indicated mice were evaluated by flow cytometry ($n = 8$ per group). ICER/CREM^{+/+} mice without inducing EAE were used as a control ($n = 2$) ($*P < 0.05$; mean \pm s.e.m.; one-way ANOVA). **(g,h)** Mononuclear cells were collected at day 8 from inguinal lymph nodes and further cultured *ex vivo* with MOG for 3 days. **(g)** IL-17A/F and **(h)** IFN γ concentrations were measured by ELISA ($*P < 0.05$; mean \pm s.e.m.; $n = 7$).

CREM deficiency would delay or protect lupus-prone mice from developing disease. We examined the effect of genetic ICER/CREM depletion on the development of spontaneous lupus by crossing ICER/CREM-deficient mice with lupus-prone B6.MRL-Fas^{lpr/lpr} (B6.lpr) mice (both in the C57BL/6J background). We studied female ICER/CREM-deficient B6.lpr mice at 28 weeks of age and found that they displayed smaller spleens and cervical lymph nodes compared with ICER/CREM-sufficient B6.lpr mice (Fig. 6a,b). Immunostaining analysis revealed less deposition of complement 3 (C3) in the glomeruli of ICER/CREM-deficient B6.lpr compared with that in ICER/CREM-sufficient B6.lpr mice (Fig. 6c). Serum levels of anti-dsDNA antibody, proteinuria and double-negative T cells (CD3⁺CD4⁻CD8⁻ cells), and serum

IL-17 were also significantly reduced in the ICER/CREM-deficient mice (Fig. 6d-g). When we examined cell infiltration in the kidneys, ICER/CREM-deficient mice had fewer CD45⁺-infiltrating lymphocytes (CD45⁺ per 10⁵ events), T cells (CD45⁺CD90.2⁺) and IL-17A-producing cells (CD45⁺CD90.2⁺IL-17A⁺) than ICER/CREM-sufficient mice (Fig. 6h). Furthermore, as shown in Fig. 6i, the survival curve indicated a significantly prolonged lifespan in B6.lpr.ICER/CREM-sufficient mice (median survival day; 279.5 days for ICER/CREM-sufficient mice and 361.0 days for ICER/CREM-deficient mice; $P = 0.0044$, Gehan-Breslow-Wilcoxon test). Collectively, ICER/CREM deficiency rescues multiple lupus characteristics and extends the lifespan of B6.lpr mice.

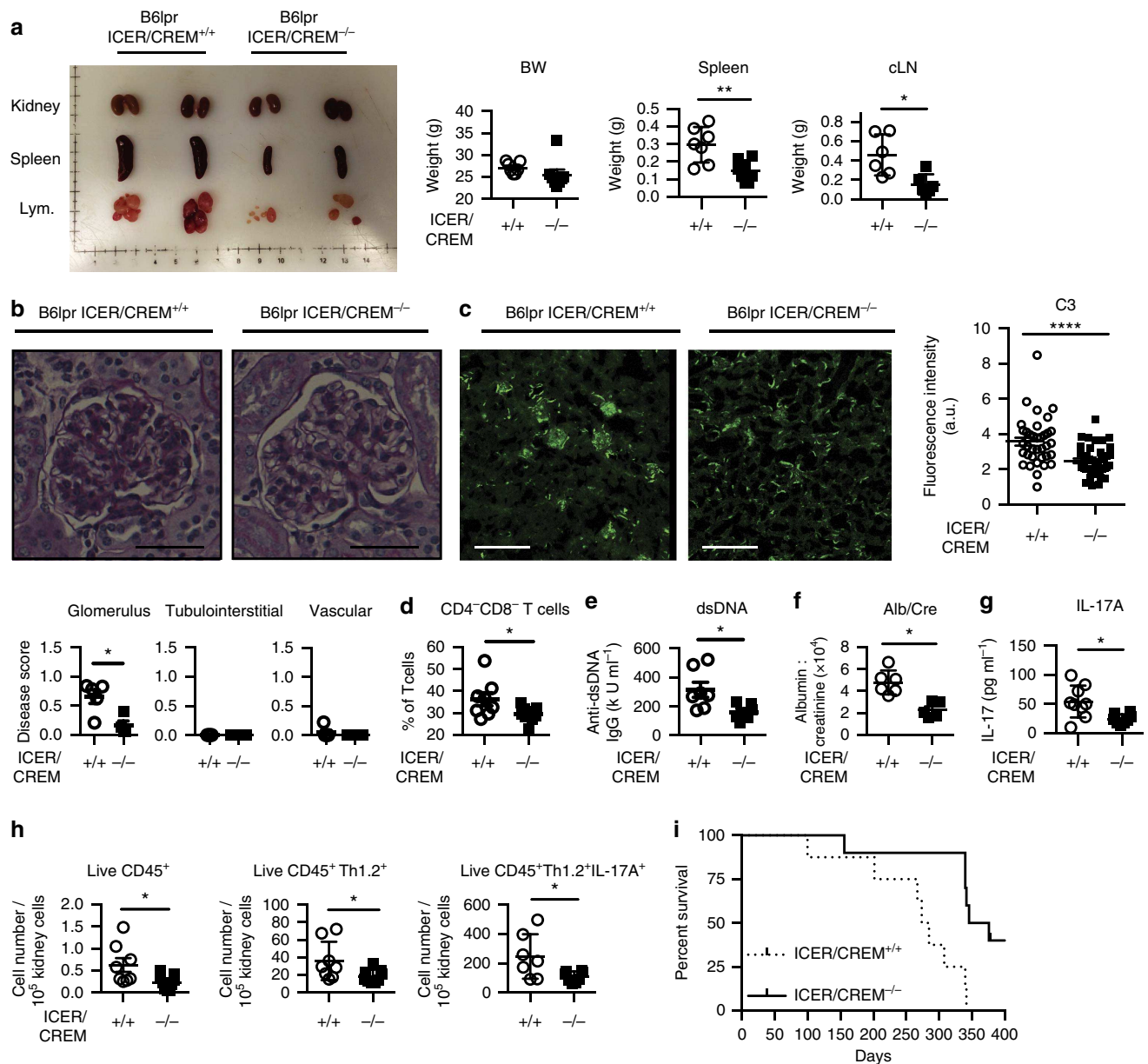


Figure 6 | B6.lpr.ICER/CREM^{-/-} mice display less autoimmunity. (a) B6.lpr.ICER/CREM^{+/+} ($n=7$) and B6.lpr.ICER/CREM^{-/-} ($n=8$) mice were killed at 28 weeks of age. Kidney, spleen ($n=7$ and 8 mice, respectively) and cervical lymph nodes ($n=6$ per group) were dissected and weighted ($*P<0.05$, $**P<0.01$; mean \pm s.e.m.). (b) Periodic acid-Schiff (PAS)-stained kidney section and disease scores were shown ($*P<0.05$; mean \pm s.e.m.; $n=5$ per group). Scale bar, 50 μ m. (c) C3 deposition in the kidney sections was assessed by direct immunofluorescence. Scale bar, 300 μ m. Cumulative data are shown on the right ($****P<0.0001$; mean \pm s.e.m.; cumulative results of total 36 glomerulus from 5 B6.lpr.ICER/CREM^{+/+} and total 40 glomerulus from 5 B6.lpr.ICER/CREM^{-/-} mice were assessed). (d) Percentage of double-negative T cells was evaluated by flow cytometry (8 B6.lpr.ICER/CREM^{+/+} and 9 B6.lpr.ICER/CREM^{-/-}). Serum anti-dsDNA IgG (7 B6.lpr.ICER/CREM^{+/+} and 6 B6.lpr.ICER/CREM^{-/-}) (e), urinary albumin to creatinine ratio ($n=6$ per group) (f) and serum IL-17A (7 B6.lpr.ICER/CREM^{+/+} and 8 B6.lpr.ICER/CREM^{-/-}) (g) were quantified by ELISA ($*P<0.05$; mean \pm s.e.m.). (h) Kidney-infiltrated CD45⁺ cells, T cells and IL-17A-producing T cells were evaluated by flow cytometry ($*P<0.05$; mean \pm s.e.m.; 8 B6.lpr.ICER/CREM^{+/+} and 9 B6.lpr.ICER/CREM^{-/-}). (i) Survival of indicated mice was monitored (8 B6.lpr.ICER/CREM^{+/+} and 10 B6.lpr.ICER/CREM^{-/-}).

ICER is increased in human Th17 cells and SLE T cells. Since we found that ICER controls Th17-related experimental inflammation and affects lupus-like manifestations of lupus-prone mice, we sought evidence that it impacts inflammatory mechanisms in human autoimmunity. We sorted peripheral blood mononuclear cells from healthy donors into memory Th1 cells, memory Th2 cells, memory Th17 cells and Treg cells by flow cytometry and compared ICER expression in each population (Fig. 7a). We did not detect ICER expression in any of the T-cell subsets before

stimulation (Supplementary Fig. 4). However, after 12 h of activation with anti-CD3 and anti-CD28 Ab, ICER was present at statistically significant amounts only in Th17 cells and not in any of the other three subsets (Fig. 7b). Finally, we stimulated CD4⁺ T cells with anti-CD3 and anti-CD28 Ab for 4 days and determined the levels of ICER expression by western blotting. As seen in Fig. 7c, SLE T cells express more ICER than normal T cells. Collectively these data suggest that ICER is induced not only in murine but also in human Th17 cells and that its levels are

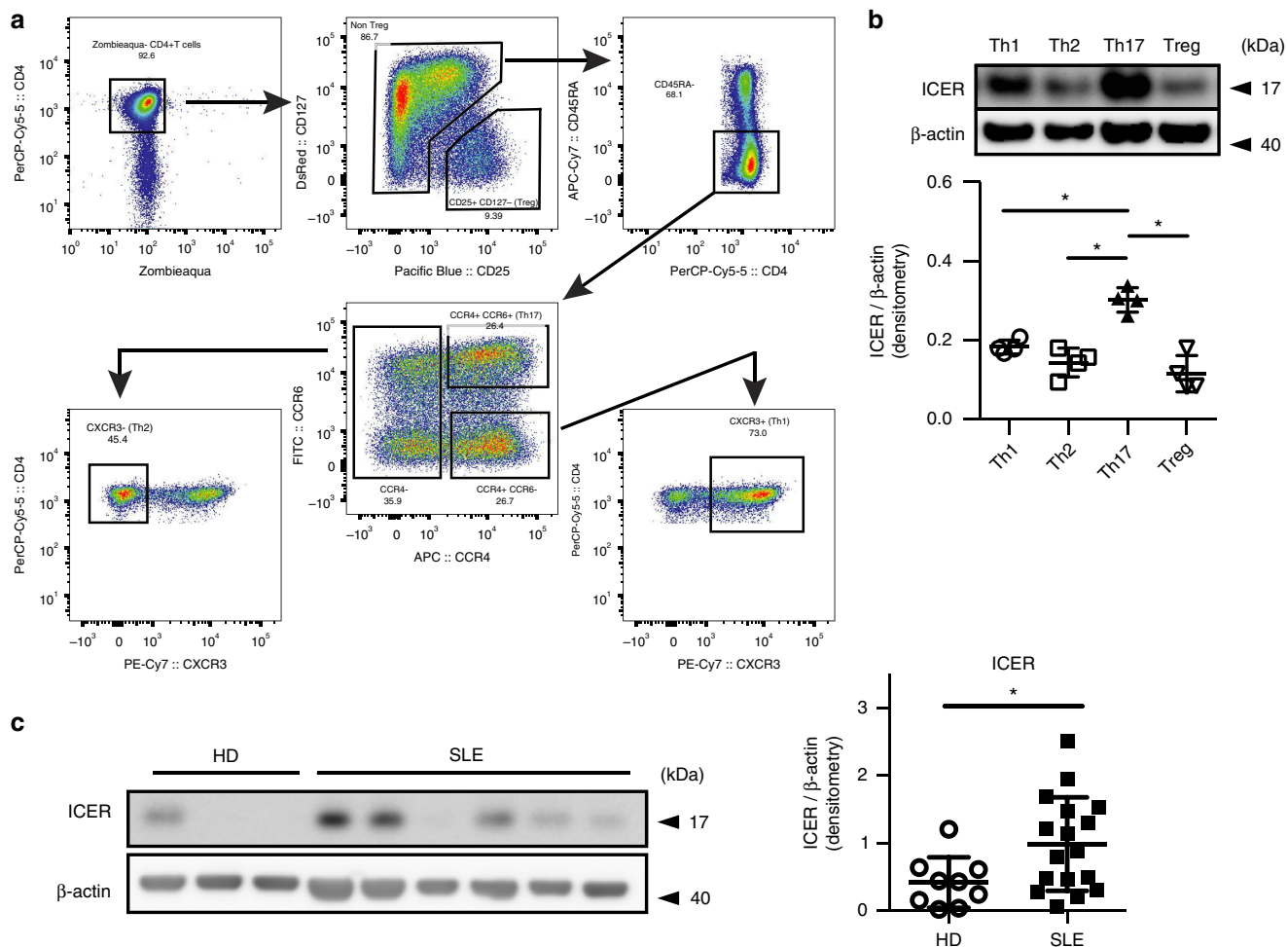


Figure 7 | Human Th17 cells and SLE T cells express increased amounts of ICER. (a) The gating strategy used to define and sort the primary lymphocytes memory subsets: Th1 (CD4⁺CD45RA⁻CXCR3⁺); Th2 (CD4⁺CD45RA⁻CCR6⁻CCR4⁺CXCR3⁻); Th17 (CD4⁺CD45RA⁻CCR6⁺CCR4⁺); and Treg (CD4⁺CD25⁺CD127⁻). (b) FACS-sorted Th1, Th2, Th17 and Treg cells were stimulated with plate-bound anti-CD3 and anti-CD28 antibodies for 12 h. ICER and β-actin expression was determined by western blot (**P* < 0.05; mean ± s.e.m., *n* = 4). (c) Purified CD4⁺ T cells from healthy donors (HD) and SLE patients were stimulated with plate-bound anti-CD3 and anti-CD28 antibodies. On day 4, cells were collected and CREM subsets and β-actin expression were examined by western blot. The graphs show cumulative data of densitometry for ICER. (**P* < 0.05; mean ± s.e.m.; HD *n* = 9 and SLE *n* = 17). See Supplementary Fig. 5 for uncropped scans of the western blot and Supplementary Table 1 for patient information.

increased in T cells from SLE patients, suggesting a role of ICER in human disease.

Discussion

Although the canonical second messenger cAMP was first described as a potent negative regulator of T-cell immune function¹⁷, recent reports have shown conflicting effects of cAMP-related transcription factors on signal transduction and T-cell differentiation. For example, CREB, a well-characterized cAMP-responding transcription factor, has been proposed as a Th17-promoting factor¹⁸ while other studies have emphasized its ability to enhance regulatory T-cell differentiation and Foxp3 transcription^{19,20}. CREM, another important cAMP-related transcription factor, is tightly regulated at the epigenetic and post-transcriptional levels. Alternative splice variants of the primary CREM gene generate isoforms that exert opposing effects on target gene expression compared with the full-length proteins¹⁷. It appears though that the relative abundance of CREM splice variants in different tissues and organs accounts for specificity of the control of target gene expression. Understanding

the expression and the function of the different CREM isoform(s) during the development of an immune response is thus warranted.

Here we demonstrate a novel important role of ICER in the generation of Th17 cells and in the development of IL-17-related diseases in mice, including AIGN, EAE and SLE. Although previous reports suggested that ICER exerts a suppressive function in effector T cells^{10,11}, we provide evidence demonstrating that ICER is the most prevalent CREM splice variant expressed during Th17 differentiation and is preferentially expressed during Th17 generation compared with other T helper subsets. We show that ICER is involved in Th17 T-cell generation and is implicated in Th17/IL-17-dependent autoimmune diseases.

Th17 differentiation requires the presence of IL-6 and its transducing signalling partner STAT3. Our findings provide evidence showing that ICER is a downstream partner of the IL-6/STAT3 signalling pathway. Moreover, induction of ICER during Th17 differentiation is independent of TGFβ. This suggests that ICER may be involved in the induction of pathogenic Th17 T cells, which are generated in the absence of TGFβ (ref. 21).

IL-17 is important for the development of human and murine inflammatory pathology^{4,22–24}. Here we present strong evidence that ICER/CREM is required for the expression of both organ-specific and systemic autoimmunity. Lack of ICER/CREM mitigates the development of AIGN as measured histologically and clinically. Importantly, the number of IL-17-producing cells in the kidney of ICER/CREM knockout mice is significantly diminished. Similarly, lack of ICER/CREM decreases EAE clinical and histopathologic severity, as well as the frequency of peripheral IL-17-producing cells. Of interest, T cells from draining lymph nodes of ICER/CREM-deficient mice display normal IFN γ production, but a limited production of IL-17, pointing out a predominant effect of ICER/CREM on Th17 differentiation. In the absence of ICER/CREM, B6.*lpr* lupus-prone mice display less systemic autoimmunity (anti-dsDNA antibody) and renal pathology. This phenotype is linked to decreased serum levels of IL-17 levels and to reduced numbers of IL-17-producing cells in the kidney. These results underscore the importance of ICER/CREM in the production of IL-17 and autoimmune disease pathogenesis^{25–27}.

In humans we show that Th17 CD4⁺ T-cell-differentiated subset express higher level of ICER than Th1, Th2 and Treg subsets. More importantly, we observed increased expression of ICER in CD4⁺ T cells isolated from SLE patients, underscoring the translational value of our finding. SLE patients display increased serum levels of IL-17A, expanded frequency of IL-17-producing T cells in the peripheral blood and a massive infiltration of Th17 cells in organs involved by the disease, like the kidneys^{28,29}. Furthermore, IL-17A levels correlate with SLE disease activity. Sera from patients with SLE show increased levels of IL-6 (ref. 30), and STAT3 (ref. 31) is elevated in SLE T cells, abnormalities that could account for the augmented expression of ICER.

Robust activation of the cAMP-related signalling pathway inhibits T-cell activation¹⁷ while precise control of the ratio of cAMP-related transcription factors favours a differentiation towards a Th17 phenotype¹⁸. Since ICER negatively regulates cAMP-related transcription, ICER may play a major role in this fine-tuning process. Since it has been reported that levels of cAMP are increased in ICER/CREM-deficient mice³², and cAMP is known to regulate glycolysis and glycolysis plays a critical role in Th17 cell differentiation, we speculate that ICER/CREM affects the glycolysis pathway. In SLE, both CREM α overexpression and induced ICER act in concert to promote a pro-inflammatory Th17 phenotype, by allowing increased ROR γ t accumulation.

In conclusion, we have identified ICER as a novel requisite determinant of Th17 cell generation. It acts downstream of STAT3, and after its binding to the IL-17 promoter, it enhances the accumulation of the canonical *Il17* transcription factor ROR γ t. Importantly, genetic elimination of all ICER/CREM isoforms suppressed the development of organ-specific and systemic autoimmunity. The translational importance of our work is highlighted by our findings showing that ICER expression is increased in SLE T cells, as well as in human Th17 memory cells. Our findings identify a unique role for ICER, which impacts both organ-specific and systemic autoimmunity in a Th17-dependent manner.

Methods

Human samples and cell lines. Patients who fulfilled the criteria for the diagnosis of SLE as set forth by the American College of Rheumatology³³ and healthy individuals were enrolled. The BIDMC Institutional Review Board approved the study protocol (2006-P-0298). Informed consent was obtained from all study subjects. The disease activity for each patient was calculated using the clinicolaboratory index SLE Disease Activity Index³⁴. Age-, sex- and ethnicity-matched healthy individuals were chosen as controls (Supplementary Table 1). Peripheral venous blood was collected in heparin-lithium tubes, and total human T cells were

purified as described previously³⁵. In short, T cells were isolated by negative selection (RosetteSep, Stem Cell Technologies) before density gradient purification (Lymphoprep, Nycomed). HEK-293T cells were purchased from American Type Culture Collection (ATCC; Manassas, VA) and has been tested for mycoplasma by ATCC.

Mice. SV129/Bl6.ICER/CREM^{-/-} mice were originally cloned by Guenther Schuetz, DKFZ Heidelberg³⁶. Animals were crossed to C57BL/6J mice for over nine generations to transfer the ICER/CREM^{-/-} locus to the B6 background. Female B6.MRL-Fas^{lpr}/J (B6.*lpr*), C57BL/6-Il17atm1Bcgen/J (IL-17GFP), STOCK Tg (Cd4-cre)1Cwi/Bfluj (CD4^{cre+}), MRL/MpJ-Fas^{lpr}/J and B6.129S1-Stat3tm1Xyfu/J (STAT3^{fl/fl}) mice were purchased from The Jackson Laboratory. B6.*lpr*.ICER/CREM^{-/-} mice were made by crossing B6.ICER/CREM^{-/-} mice with B6.*lpr* mice. CD4^{cre+}.STAT3^{fl/fl} mice were made by crossing STAT3^{fl/fl} mice with CD4^{cre+} mice. B6.ICER/CREM^{-/-}.IL-17GFP mice were made by crossing B6.ICER/CREM^{-/-} mice with IL-17GFP mice. Animals were killed at the end of their 8–12 weeks of life for *in vitro* culture experiments and indicated week for *in vivo* experiments. All mice were maintained in an SPF animal facility (Beth Israel Deaconess Medical Center). Experiments were approved by the Institutional Animal Care and Use Committee of BIDMC. All mice were genotyped to validate claimed strain.

Single-cell isolation. Spleens and lymph nodes were excised and single-cell suspensions were obtained. Kidneys were perfused with PBS and digested with collagenase type IV (100 μ g ml⁻¹) (Worthington Biochemical) in Hank's balanced salt solution (HBSS) for 30 min (37 °C). Infiltrating lymphocytes in spinal cords were isolated as previously described³⁷. Briefly, spinal cords were digested with collagenase type IV (100 μ g ml⁻¹) in HBSS for 20 min (37 °C). Cell suspensions from digested spinal cords were subjected to density separation using Optiprep density gradient medium (Sigma-Aldrich) followed by flow cytometry.

In vitro T-cell differentiation. Naive CD4⁺ T cells were purified by mouse CD4⁺ CD62L⁺ T Cell Isolation Kit II (Miltenyi Biotec). Purified naive T cells were stimulated with plate-bound goat anti-hamster antibodies, soluble anti-CD3 (0.25 μ g ml⁻¹, 145-2C11; Biologend) and anti-CD28 (0.5 μ g ml⁻¹, 37.51; Biologend) for Th0-non-polarized condition culture. In addition to Th0-non-polarized condition, following stimulation was used for each polarized condition: IL-12 (20 ng ml⁻¹; R&D Systems) and anti-IL-4 (10 μ g ml⁻¹, C17.8; Biologend) for Th1; IL-4 (100 ng ml⁻¹; R&D Systems), anti-IL-12 (10 μ g ml⁻¹; Biologend) and anti-IFN γ (10 μ g ml⁻¹, XMG1.2; Biologend) for Th2; IL-6 (3 ng ml⁻¹ or indicated concentration; R&D Systems), TGF- β 1 (0.3 ng ml⁻¹; R&D Systems), anti-IL-4 (10 μ g ml⁻¹, C17.8; Biologend) and anti-IFN γ (10 μ g ml⁻¹; XMG1.2; Biologend) for Th17; and IL-2 (20 ng ml⁻¹; R&D Systems), TGF- β 1 (3 ng ml⁻¹; R&D Systems), anti-IL-4 (10 μ g ml⁻¹, C17.8; Biologend) and anti-IFN γ (10 μ g ml⁻¹, XMG1.2; Biologend) for Tregs. For signal transduction studies, STA21 (STAT3 inhibitor; Santa Cruz Biotechnology) and SMAD3 inhibitor (SIS3; Santa Cruz Biotechnology) were added to cultures on day 0.

Western blotting. Cell lysate was separated on NuPAGE 4–12% Bis-Tris Gel (Life Technologies) and proteins were transferred to a nitrocellulose membrane. Following antibodies were used: anti-CREM1 Ab (clone X-12, Santa Cruz, 1:500); Stat3 Mouse mAb (clone 124H6, Cell Signaling, 1:500); Phospho-Stat3 (Tyr705) Mouse mAb (clone 3E2, Cell Signaling, 1:500); anti- β -actin (clone AC-74, Sigma-Aldrich, 1:10,000); goat anti-mouse IgG coupled with horseradish peroxidase (catalogue# sc-2005, Santa Cruz, 1:3,000); and goat anti-rabbit IgG coupled with horseradish peroxidase (catalogue# sc-2004, Santa Cruz, 1:3,000). The ECL system (Amersham) was used for detection.

Flow cytometry. Following antibodies were used for flow cytometry analysis: for mouse, CD4 (clone GK1.5); CD8a (clone 53-6.7, 1:100); CD19 (clone 605, 1:100); CD25 (clone PC61, 1:100); CD44 (clone IM7, 1:100); CD45 (clone 30-F11, 1:100); CD62L (clone MEL-14, 1:100); CD90.2 (clone 53-2.1, 1:100); IL-17A (clone JC11-18H10.1, 1:50); IFN γ (clone XMG1.2, 1:50); and IL-4 (clone 11B11, 1:50) were purchased from BioLegend. CD3 α (clone 17A2, 1:100) and Foxp3 (clone FJK-16s, 1:50) were purchased from eBioscience. For human, CD45RA (clone HI100, 1:100), CD25 (clone BC96, 1:100), CD127 (clone A019D5, 1:100), CCR4 (clone L291H4, 1:100), CCR6 (clone G034E3, 1:100) and CXCR3 (clone G025H7, 1:100) were purchased from BioLegend. A CD4 (clone SK3, 1:100) was purchased from eBioscience. A 7AAD (surface) or a Zombie Aqua Fixable Viability Kit (intracellular) staining was performed for eliminating dead cells (BioLegend). Surface staining was performed on ice for 20–30 min. Absolute cell numbers were calculated on the basis of the percentage of each cell population. For intracellular staining, collected cells were stimulated for 4 h in culture medium with phorbol myristate acetate (500 ng ml⁻¹; Sigma-Aldrich), ionomycin (1.4 μ g ml⁻¹; Sigma-Aldrich) and monensin (1 μ l ml⁻¹; BD Biosciences), except Foxp3 detection. Cytofix/Cytoperm and Perm/Wash buffer (BD Biosciences; for IL-17A/IL-4/IFN γ staining) or Mouse Regulatory T-cell staining kit (eBioscience; for Foxp3 staining) were used for fixation and permeabilization. All flow cytometry data were acquired

on a BD LSRII and analysed with FlowJo. All procedures were performed according to the manufacturer's instructions.

Western blotting for formalin-fixed and FACS-sorted cells. Cells from 18-week-old MRL/lpr mice and MRL/Mpj mice spleen and lymph node were stimulated in culture medium contains phorbol myristate acetate (500 ng ml^{-1} ; Sigma-Aldrich), ionomycin ($1.4 \mu\text{g ml}^{-1}$; Sigma-Aldrich) and monensin ($1 \mu\text{M}$; BD Biosciences) for 3 h. Collected cells were stained by a Zombie Aqua Fixable Viability Kit, CD4, CD8, CD90.2, CD19, CD62L antibodies (for surface) and IL-17A antibodies (for intracellular) as described before. After staining, ZA-CD19-CD62L-CD8-Th1.2 + IL-17 + cells (for IL-17-producing cells) and ZA-CD19-CD62L + CD8-CD4 + Th1.2 + IL-17- cells (for naive CD4 T cells) were subsequently sorted by BD FACS Aria II (five lasers 355, 405, 488, 561 and 640 nm; BD Bioscience). Sorted cells were washed with PBS, then lysed in Extraction Buffer EXB Plus (Qproteome FFPE Tissue Kit, Qiagen), which contains 6% β -mercaptoethanol (Sigma-Aldrich), on ice for 5 min, followed by heat denaturation at 100°C for 20 min. Then samples were incubated at 80°C for 2 h with vortexing every 2 min, followed by centrifuging them for 15 min in cold room. A volume of $5 \mu\text{l}$ of NuPAGE LDS Sample Buffer ($4 \times$) (Invitrogen) was added to the supernatant containing the extracted proteins.

ELISA. Following ELISA kits were used: ELISA MAX Deluxe SET Mouse IL-17A/F; IFN- γ and IL-2 (BioLegend); mouse anti-dsDNA IgG ELISA (Alpha Diagnostic Intl. Inc.); Parameter Creatinine Kit (R&D Systems); and Mouse Albumin ELISA Quantitation Set (Bethyl Laboratories). All procedures were performed according to the manufacturer's instructions.

RNA isolation and quantitative PCR. Total RNA was prepared using the Qiagen RNeasy Mini kit (Qiagen) and RNA was reverse transcribed into cDNA using the EcoDry Premix (Oligo dT) (Clontech) according to the manufacturer's instructions. Quantitative PCR was performed by using LightCycler 480 SYBR Green I Master (Roche). Target genes were detected using intron-spanning primers. Gene expression was assessed by comparative CT method. Primers information is described in the Supplementary Table 2.

ICER subset-overexpressing vectors. Plasmid contains wild-type ICER coding sequence (corresponding to GenBank. AJ311667.1) was kindly gifted by Dr Shogo Endo³⁸, and subcloned into pIRES2-DsRed-Express vector (Clontech Laboratories Inc.). Following oligonucleotide sequences were used: 5'-TGATCTCGAGCATGG CTGTAAGTGGAGATG-3'; and 5'-TGCTGGATCCCGTACTCTACTTTATGG CAAT-3'. ICER γ overexpression vector and N'-FLAG-tagged overexpressing vectors were generated using Q5 site-directed mutagenesis kit (New England Biolabs). Following oligonucleotide sequences were used: 5'-CTGCCACAGGT GACATGCCAAC-3'; and 5'-CAGTTTCATCTCCAGTTACAGC-3'. For generating N'-FLAG-tagged overexpressing plasmid, FLAG sequence (DYKDDDDK) were inserted N' terminal of ICER-overexpressing plasmid or ICER γ -overexpressing plasmid. Following oligonucleotide sequences were used: 5'-GACGATGACAAGGCTGTAAGTGGAGATGAAAC-3'; and 5'-ATCCT TGTAGTCCATCCTCGAGATCTGAG-3'. All constructs were validated by DNA sequencing. All procedures were performed according to the manufacturer's instructions.

Transfection of overexpressing vectors. For transfection to HEK-293T cells, plasmids were transfected to 60–80% confluent HEK-293T cells by poly-ethylenimine 'Max' (Polysciences, Inc.) according the manufacturer's protocol and cultured 2 days in culture media. For ICER-overexpressing experiments in murine primary T cells, cells were collected 1 day after starting culture and empty vector, ICER-overexpressing plasmid, or ICER γ -overexpressing plasmid were transfected using the Amaxa Mouse T Cell Nucleofector Kit with the X-001 programme (Amaxa) according to the manufacturer's protocol. The supernatant of each culture was saved in 4°C during transfection and recovery. After 4 h recovery at 37°C , cells were again cultured in those supernatant for 2 days. The efficacy of the transfection always exceeds 10%.

Luciferase reporter constructs. To generate the mouse ICER P2 promoter luciferase promoter construct, we TA-cloned the p2 promoter from genomic DNA of C57BL/6 mouse using KOD XL DNA Polymerase (Thomas Scientific) and pGEM-T easy Vector System (Promega). Following primers were used: MS_pICER_F, 5'-CACTGTGGAGCTGGTATGT-3'; and MS_pICER_R, 5'-CCC ACTGTCTACTAGGCAGG-3'. Using TA-cloned mouse ICER P2 promoter, a PCR was performed with primers Mlu1_mpiICER_F, 5'-GTTAACGCGTCACTG TGGAGCTG-3' and Bgl2_mpiICER_R, 5'-CGATAGATCTCCACTTGTCA CTAG-3' for adding restriction enzyme sites (Mlu1 and Bgl2 for 5'-end and 3'-end, respectively). Then this amplicon was ligated into pGL3 vector using T4 DNA Ligase (M202; New England Biolabs) to generate ICER_p2_pGL3_vector. Q5 site-directed mutagenesis kit (New England Biolabs) was used for site-directed mutagenesis. Following DNA oligonucleotide was used for site-directed

mutagenesis at the +586/+594 STAT3-binding site (TTCTGGAA) within ICER_p2_pGL3_vector; 5'-TCGTGTTTCAGCGGGAA-3 and 5'-ATGTAATGACGTCAGCCC-3'. The pGL4 mL-17A promoter (pGL4 mL-17 0.6 kb promoter) was a gift from Warren Strober (Addgene plasmid # 20126)³⁹. Q5 site-directed mutagenesis kit (New England BioLabs) was used for site-directed mutagenesis. Following DNA oligonucleotide was used for site-directed mutagenesis at the -116/-109 CRE site (TGACCTCA) within pGL4 mL-17A_vector; 5'-TTTGGAGTGAATCTTACTCAAATG-3' and 5'-GCACAGAACCACCCCTT-3'. All Sequences were verified (Genewiz). All procedures were performed according to the manufacturer's instructions.

Luciferase assay. Luciferase reporter plasmid was transfected using the Amaxa Mouse T Cell Nucleofector Kit with the X-001 programme (Amaxa) on day 2 of culture. Each reporter experiment included 200 ng renilla luciferase construct as an internal control. Luciferase activity was quantified using the Promega Dual Luciferase Assay System (Promega) on day 3 of culture according to the manufacturer's instructions.

Chromatin immunoprecipitation assays. Freshly isolated naive CD4+ T cells from B6. ICER/CREM^{-/-} mice were cultured in Th17 polarizing condition for 3 days. Plasmids were transfected as described above on day 1. Collected cells were lysed and ChIP assay was performed using MAGnify Chromatin Immunoprecipitation System (Invitrogen). For ROR γ t immunoprecipitation, Ds-Red⁺ vector-transfected cells were sorted by flow cytometry before ChIP assay. ANTI-FLAG antibody produced in rabbit (Sigma-Aldrich), and anti-Human/Mouse ROR gamma (t) Purified AFKJS-9; eBioscience) were used for immunoprecipitation. Following primer pairs were used: 5'-CGTCATAAAGGGGTGGTTCT-3' and 5'-TTACGTCAAGAGTGGGTGG-3' for CRE/ROR-binding element; and 5'-GAACTGGAAATGAAACCTTTGG-3' and 5'-TTTCATCACAGCAACCTT TC-3' for non-CRE site. All procedures were performed according to the manufacturer's instructions.

AIGN model. A volume of $50 \mu\text{l}$ Freund's Incomplete Adjuvant (Thermo Scientific), $250 \mu\text{g}$ HR37a *Mycobacterium tuberculosis* powder (Difco) and 0.1 mg ml^{-1} Rabbit IgG (Pierce) were emulsified and injected in each flank subcutaneously in 8-week-old male mice 3 days before starting the experiment. On day 0, $100 \mu\text{l}$ Rabbit anti-mouse GBM serum (kindly gifted from T. N. Mayadas, Pathology of Harvard medical school, Boston) was injected intravenously. Urine samples were collected on day 0, 7, 14 and 21 of the experiment, and urinary albumin and creatinine were quantified by ELISA as above. On day 21, kidneys were excised from the mice and processed for flow cytometry and histology. Clinical and histologic scores were evaluated in a blind manner.

EAE disease model. On day 0, 8-week-old male mice were immunized subcutaneously with $50 \mu\text{g}$ MOG_{35–55} peptide emulsified in complete Freund's adjuvant (Sigma) containing 4 mg ml^{-1} *M. tuberculosis* extract (H37Ra; Difco) distributed between the two hind flanks. On days 0 and 2, 150 ng per mouse pertussis toxin (List Biological Laboratories) was given by intraperitoneal injection. Mice were monitored and weighted daily until day 28 of the experiment, and clinical scores were given as follows: 1, limp tail; 2, hindlimb paresis; 3, hindlimb paralysis; 4, tetraplegia; and 5, moribund. Clinical and histologic scores were evaluated in a blind manner.

Priming assay for MOG immunizations. Mice were immunized with $50 \mu\text{g}$ MOG_{35–55} peptide emulsified in complete Freund's adjuvant into both flanks. Eight days after the immunization, inguinal lymph nodes were excised.

Histological staining and analysis. For EAE models, sections from 10% formalin-fixed spinal cords were stained with haematoxylin and eosin and luxol fast blue. Histology was scored by an investigator blinded to experimental group. Spinal cord sections were scored by an investigator blinded to experimental group as follows: 0, no infiltration (<50 cells); 1, mild infiltration of nerve or nerve sheath (50–100 cells); 2, moderate infiltration (100–150 cells); 3, severe infiltration (150–200 cells); and 4, massive infiltration (>200 cells). For AIGN model and B6.lpr mice, sections from 10% formalin-fixed kidneys were stained with periodic acid-schiff. Renal lesions were evaluated blindly by a nephro-pathologist as described previously¹⁴ for B6.lpr mice or criteria described in <http://www.bolderbiopath.com/systemic-lupus-erythematosus-sle/> for AIGN model. Sections of frozen kidneys were stained with Hoechst 33258 (Life technologies; 1:1,000) and Fluorescein-conjugated goat IgG to mouse complement C3 (MP Biomedicals; 1:200). Then specimens were analysed with a Nikon Eclipse Ti confocal microscope. Images were analysed with EZ-C1 v.3.7 and Image J.

Assessment of ICER expression from isolated human T cells. Isolated T cells from SLE patients and healthy controls were stimulated with pre-coated $1 \mu\text{g ml}^{-1}$ anti-CD3 (clone OKT3, BioXcell) and $1 \mu\text{g ml}^{-1}$ anti-CD28 (clone 28.2, BioLegend) for 4 days.

Human primary CD4⁺ lymphocyte subset sorting. Peripheral blood mononuclear cells were isolated from Trima-collar (Blood Donor Center, Boston Children Hospital) by density gradient centrifugation (Lymphoprep, Nycomed). CD4⁺ T cells were enriched using CD4⁺ T-cell isolation kit II (Miltenyi Biotec). After staining, primary lymphocyte subsets were subsequently sorted by BD FACS Aria II (five lasers 355, 405, 488, 561 and 640 nm; BD Bioscience).

Statistics. Samples sizes were chosen based on previous experience in our laboratory. Statistical analyses were performed in GraphPad Prism version 6.0 software. Statistical significance was determined by *t*-tests (two-tailed) for two groups or one-way analysis of variance with Bonferroni's multiple comparisons tests for three or more groups. For AIGN model and EAE model, clinical scores and body weight changes of each treatment group were compared using two-way analysis of variance. *P* values of <0.05 were considered statistically significant. No data were excluded from the statistical analysis.

Data availability. The data that support the findings of this study are available from the corresponding author on request.

References

- Crispin, J. C. & Tsokos, G. C. Interleukin-17-producing T cells in lupus. *Curr. Opin. Rheumatol.* **22**, 499–503 (2010).
- Ciofani, M. *et al.* A validated regulatory network for Th17 cell specification. *Cell* **151**, 289–303 (2012).
- Harrington, L. E. *et al.* Interleukin 17-producing CD4⁺ effector T cells develop via a lineage distinct from the T helper type 1 and 2 lineages. *Nat. Immunol.* **6**, 1123–1132 (2005).
- Korn, T., Bettelli, E., Oukka, M. & Kuchroo, V. K. IL-17 and Th17 Cells. *Annu. Rev. Immunol.* **27**, 485–517 (2009).
- Tsokos, G. C. Systemic lupus erythematosus. *N. Engl. J. Med.* **365**, 2110–2121 (2011).
- Rauen, T., Hedrich, C. M., Juang, Y. T., Tenbrock, K. & Tsokos, G. C. cAMP-responsive element modulator (CREM)α protein induces interleukin 17A expression and mediates epigenetic alterations at the interleukin-17A gene locus in patients with systemic lupus erythematosus. *J. Biol. Chem.* **286**, 43437–43446 (2011).
- Lippe, R. *et al.* CREMα overexpression decreases IL-2 production, induces a T(H)17 phenotype and accelerates autoimmunity. *J. Mol. Cell Biol.* **4**, 121–123 (2012).
- Foulkes, N. S. & Sassone-Corsi, P. More is better: activators and repressors from the same gene. *Cell* **68**, 411–414 (1992).
- Foulkes, N. S., Borrelli, E. & Sassone-Corsi, P. CREM gene: use of alternative DNA-binding domains generates multiple antagonists of cAMP-induced transcription. *Cell* **64**, 739–749 (1991).
- Bodor, J., Spetz, A. L., Strominger, J. L. & Habener, J. F. cAMP inducibility of transcriptional repressor ICER in developing and mature human T lymphocytes. *Proc. Natl Acad. Sci. USA* **93**, 3536–3541 (1996).
- Bodor, J. *et al.* Suppression of T-cell responsiveness by inducible cAMP early repressor (ICER). *J. Leukoc. Biol.* **69**, 1053–1059 (2001).
- Verjans, E. *et al.* The cAMP response element modulator (CREM) regulates TH2 mediated inflammation. *Oncotarget* **6**, 38538–38551 (2015).
- Crispin, J. C. *et al.* Cutting edge: protein phosphatase 2A confers susceptibility to autoimmune disease through an IL-17-dependent mechanism. *J. Immunol.* **188**, 3567–3571 (2012).
- Koga, T. *et al.* CaMK4-dependent activation of AKT/mTOR and CREM-α underlies autoimmunity-associated Th17 imbalance. *J. Clin. Invest.* **124**, 2234–2245 (2014).
- Pisitkun, P. *et al.* Interleukin-17 cytokines are critical in development of fatal lupus glomerulonephritis. *Immunity* **37**, 1104–1115 (2012).
- Ohl, K., Wiener, A., Schippers, A., Wagner, N. & Tenbrock, K. Interleukin-2 treatment reverses effects of cAMP-responsive element modulator α-overexpressing T cells in autoimmune-prone mice. *Clin. Exp. Immunol.* **181**, 76–86 (2015).
- Mosenden, R. & Tasken, K. Cyclic AMP-mediated immune regulation—overview of mechanisms of action in T cells. *Cell. Signal.* **23**, 1009–1016 (2011).
- Hernandez, J. B. *et al.* The CREB/CRTC2 pathway modulates autoimmune disease by promoting Th17 differentiation. *Nat. Commun.* **6**, 7216 (2015).
- Kim, H. P. & Leonard, W. J. CREB/ATF-dependent T cell receptor-induced FoxP3 gene expression: a role for DNA methylation. *J. Exp. Med.* **204**, 1543–1551 (2007).
- Ogawa, C. *et al.* TGF-β-mediated Foxp3 gene expression is cooperatively regulated by Stat5, Creb, and AP-1 through CNS2. *J. Immunol.* **192**, 475–483 (2014).
- McGeachy, M. J. *et al.* TGF-β and IL-6 drive the production of IL-17 and IL-10 by T cells and restrain T(H)-17 cell-mediated pathology. *Nat. Immunol.* **8**, 1390–1397 (2007).
- Ooi, J. D., Kitching, A. R. & Holdsworth, S. R. Review: T helper 17 cells: their role in glomerulonephritis. *Nephrology (Carlton)* **15**, 513–521 (2010).
- Park, H. *et al.* A distinct lineage of CD4 T cells regulates tissue inflammation by producing interleukin 17. *Nat. Immunol.* **6**, 1133–1141 (2005).
- Kim, J. & Krueger, J. G. The immunopathogenesis of psoriasis. *Dermatol. Clin.* **33**, 13–23 (2015).
- Moulton, V. R. & Tsokos, G. C. T cell signaling abnormalities contribute to aberrant immune cell function and autoimmunity. *J. Clin. Invest.* **125**, 2220–2227 (2015).
- Amarilyo, G., Lourenco, E. V., Shi, F. D. & La Cava, A. IL-17 promotes murine lupus. *J. Immunol.* **193**, 540–543 (2014).
- Apostolidis, S. A., Lieberman, L. A., Kis-Toth, K., Crispin, J. C. & Tsokos, G. C. The dysregulation of cytokine networks in systemic lupus erythematosus. *J. Interferon Cytokine Res.* **31**, 769–779 (2011).
- Kyrtaris, V. C., Zhang, Z., Kuchroo, V. K., Oukka, M. & Tsokos, G. C. Cutting edge: IL-23 receptor deficiency prevents the development of lupus nephritis in C57BL/6-lpr/lpr mice. *J. Immunol.* **184**, 4605–4609 (2010).
- Crispin, J. C. *et al.* Expanded double negative T cells in patients with systemic lupus erythematosus produce IL-17 and infiltrate the kidneys. *J. Immunol.* **181**, 8761–8766 (2008).
- Abdel Galil, S. M., Ezzeldin, N. & El-Boshy, M. E. The role of serum IL-17 and IL-6 as biomarkers of disease activity and predictors of remission in patients with lupus nephritis. *Cytokine* **76**, 280–287 (2015).
- Harada, T. *et al.* Increased expression of STAT3 in SLE T cells contributes to enhanced chemokine-mediated cell migration. *Autoimmunity* **40**, 1–8 (2007).
- Vang, A. G. *et al.* Regulatory T-cells and cAMP suppress effector T-cells independently of PKA-CREM/ICER: a potential role for Epac. *Biochem. J.* **456**, 463–473 (2013).
- Hochberg, M. C. Updating the American College of Rheumatology revised criteria for the classification of systemic lupus erythematosus. *Arthritis Rheum.* **40**, 1725 (1997).
- Bombardier, C., Gladman, D. D., Urowitz, M. B., Caron, D. & Chang, C. H. Derivation of the SLEDAI. A disease activity index for lupus patients. The Committee on Prognosis Studies in SLE. *Arthritis Rheum.* **35**, 630–640 (1992).
- Sunahori, K., Juang, Y. T. & Tsokos, G. C. Methylation status of CpG islands flanking a cAMP response element motif on the protein phosphatase 2Aα promoter determines CREB binding and activity. *J. Immunol.* **182**, 1500–1508 (2009).
- Blendy, J. A., Kaestner, K. H., Weinbauer, G. F., Nieschlag, E. & Schutz, G. Severe impairment of spermatogenesis in mice lacking the CREM gene. *Nature* **380**, 162–165 (1996).
- Nguyen, H. X., Beck, K. D. & Anderson, A. J. Quantitative assessment of immune cells in the injured spinal cord tissue by flow cytometry: a novel use for a cell purification method. *J. Vis. Exp.* **50**, e2698 (2011).
- Han, W. *et al.* [Reduced locomotor sensitization induced by methamphetamine and altered gene expression in ICER overexpressing mice]. *Nihon Shinkei Seishin Yakurigaku Zasshi* **31**, 79–80 (2011).
- Zhang, F., Meng, G. & Strober, W. Interactions among the transcription factors Runx1, RORγ and Foxp3 regulate the differentiation of interleukin 17-producing T cells. *Nat. Immunol.* **9**, 1297–1306 (2008).

Acknowledgements

This work was supported by NIH grant (NIAID #R37AIO49954 to G.C.T., and #R01AR060849 to V.K.), 2011 Japan Sumitomo Life Welfare and Culture Foundation Subsidy for Invitation of Overseas Scientists (to N.Y.), 2013 Japan Society for the promotion of science postdoctoral fellowships for research abroad (to N.Y.) and SICPA Foundation grant (to D.C.). We thank Lucia Novelli and Robin Bosse for technical assistance. We thank Cox Terhorst for reviewing the manuscript critically and providing constructive comments.

Author contributions

N.Y. designed all research studies, conducted experiments, acquired data, analysed data and wrote the manuscript; G.C.T. designed research studies, conducted experiments and wrote the manuscript; D.C. and M.P.K. acquired and analysed human data; M.M., K.O., T.K. and M.K. acquired *in vivo* murine data (EAE, B6.lpr); F.R. and J.C.C. acquired and analysed data for the AIGN experiment; T.N.M. provided rabbit anti-mouse GBM serum and analysed AIGN data; V.C.K. provided CD4^{cre} STAT3^{fl/fl} mice and human samples; K.T. provided ICER/CREM-deficient mice; S.J.B. generated vectors and edited the manuscript.

Additional information

Supplementary Information accompanies this paper at <http://www.nature.com/naturecommunications>

Competing financial interests: The authors declare no competing financial interests.

Reprints and permission information is available online at <http://npg.nature.com/reprintsandpermissions/>

How to cite this article: Yoshida, N. *et al.* ICER is requisite for Th17 differentiation. *Nat. Commun.* 7, 12993 doi: 10.1038/ncomms12993 (2016).



This work is licensed under a Creative Commons Attribution 4.0 International License. The images or other third party material in this article are included in the article's Creative Commons license, unless indicated otherwise in the credit line; if the material is not included under the Creative Commons license, users will need to obtain permission from the license holder to reproduce the material. To view a copy of this license, visit <http://creativecommons.org/licenses/by/4.0/>

© The Author(s) 2016