








 Cite this: *RSC Adv.*, 2017, 7, 25276

Observing different modes of mobility in lithium titanate spinel by nuclear magnetic resonance

 Magnus F. Graf, ^a Hermann Tempel, ^a Simone S. Köcher, ^{ab}
Roland Schierholz, ^a Christoph Scheurer,^b Hans Kungl,^a Rüdiger-A. Eichel ^{acd}
and Josef Granwehr ^{ae}

Lithium titanate (LTO) is a spinel material that is able to reversibly intercalate Li ions with minimal changes of the unit cell dimensions ("zero-strain"), making it an attractive choice as anode material for Li ion batteries. However, the nature of the Li transport in this material is still not fully understood. Here, the Li mobility in $\text{Li}_{4+x}\text{Ti}_5\text{O}_{12}$ with $x = 0$ and $x \approx 1.6$ is investigated. By regularized inversion of nuclear magnetic resonance (NMR) relaxation and spin alignment echo (SAE) data and supported by DFT simulations, solid-state NMR spectra were analyzed as a function of the respective relaxation times and correlation time constants. A clear correlation between mobility and NMR spectral features was observed, suggesting the presence of local domains with high Li ion mobility. The long-range mobility is limited by the much slower hopping between such domains and appears to be faster for either larger or less ordered local domains. For $x \approx 1.6$, spectral features indicate the formation of separate stoichiometric and overlithiated phases rather than a solid solution, yet no segregation into a fast and a slow component was observed in the relaxation and in the SAE dimension, which points towards an entangling of the two phases on a microscopic scale.

Received 8th February 2017

Accepted 30th April 2017

DOI: 10.1039/c7ra01622k

rsc.li/rsc-advances

1 Introduction

Major challenges for future battery generations are the improvement of cycle life and the reduction of the total cost of ownership. Many promising materials with potential use as anodes or solid electrolytes belong to the spinel family (AB_2O_4).^{1–5} One of them is lithium titanate (LTO, $\text{Li}_4\text{Ti}_5\text{O}_{12}$),⁶ a "zero-strain" Li host with a flat and relatively high potential of ~ 1.55 V vs. Li/Li^+ for reversible Li intercalation and a better cyclability than graphite.^{7,8} The stoichiometric compound has the chemical formula $(\text{Li}_3)^{8a}(\text{LiTi}_5)^{16d}(\text{O}_{12})^{32e}$ with the 16d sites randomly occupied by Ti ($5/6^{\text{th}}$) and Li ($1/6^{\text{th}}$).⁹ Altering the structure, e.g. by changing the defect chemistry, by raising the temperature, or by overlithiation to form $\text{Li}_{4+x}\text{Ti}_5\text{O}_{12}$ ($x \leq 3$) significantly influences the ionic and electronic conductivity.^{10–13} Upon electrochemical overlithiation, Li is inserted into 16c positions with additional Li in equivalent number moving into 16c from 8a to form a rocksalt structure.⁹ During this process, two-phase separation is observed,^{14,15} with only a small fraction of solid solution forming.¹⁶ On the other hand,

chemical overlithiation was reported to form an inserted spinel structure,^{17,18} with chemically inserted Li ions found to be trapped in 48f sites. Furthermore, different site occupation ratios for Li have been reported for different synthesis routes of LTO and overlithiated LTO (e.g. ref. 19–22).

For rational materials design the understanding of dynamical and electrochemical processes taking place in LTO is of utmost importance to establish structure–property relationships by complementing the static structural picture with dynamic information. Initial models of dynamic processes were made based on structural changes.⁹ Li diffusion in LTO depends on the size of LTO particles, with evidence for kinetic²³ as well as surface equilibrium causes.²⁴ Li diffusion has been studied by neutron diffraction,^{23,25} impedance spectroscopy¹⁸ and chronoamperometry.²⁶ The "ultra slow" regime was analyzed *via* spin alignment echo (SAE) nuclear magnetic resonance (NMR), where changes of the electric field gradient (EFG) seen by a nucleus *via* its quadrupolar coupling constant C_Q are probed.²⁷ The echo decay is characterized by a correlation time constant τ_C that may be identified as a hopping time between sites, provided that the origin and the destination of a jump are not electrically equivalent. In LTO all jumps occur between inequivalent sites with different EFGs and are therefore contributing to the SAE decay.¹² Furthermore, due to the random occupancy of 16d sites by Ti and Li ions (Fig. 1), even nominally identical sites show a distribution of EFG values. The complete intensity decay curve as a function of mixing time t_m in an SAE experiment is usually described by one or the sum of

^aInstitute of Energy and Climate Research (IEK-9), Forschungszentrum Jülich, 52425 Jülich, Germany. E-mail: j.granwehr@fz-juelich.de

^bLehrstuhl für Theoretische Chemie, Technische Universität München, Garching, Germany

^cRWTH Aachen University, Institute of Physical Chemistry, Aachen, Germany

^dJülich Aachen Research Alliance (JARA), Section JARA-Energy, Aachen, Germany

^eRWTH Aachen University, Institute of Technical and Macromolecular Chemistry, Aachen, Germany



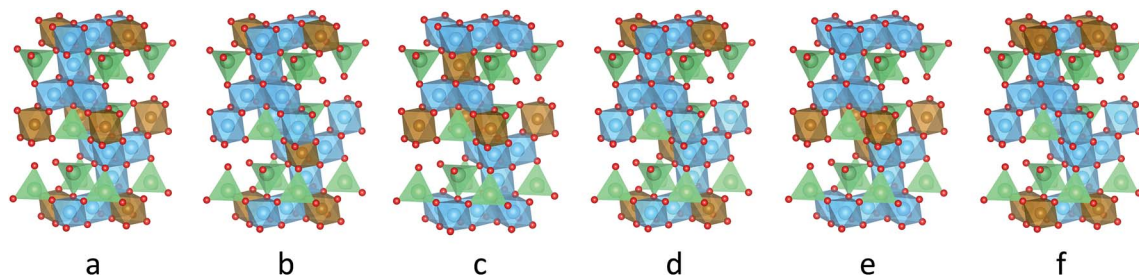


Fig. 1 Six symmetry-inequivalent stoichiometric $\text{Li}_8\text{Ti}_{10}\text{O}_{24}$ unit cells (idealized space group $R\bar{3}m$) used for *ab initio* calculation of quadrupolar coupling constants. The oxygen (O^{2-}) lattice is shown in red, blue octahedrons denote titanium (Ti^{4+}) in 16d sites, brown octahedrons and green tetrahedrons represent lithium (Li^+) in 16d and 8a sites, respectively.

several stretched exponential functions. The stretched nature of these functions is generally believed to result from a distribution of time constants with an underlying exponential kernel.²⁸

Temperature dependent measurements of conductivity²⁹ or NMR relaxation times⁴² were used to obtain activation energies E_a for jumps of Li ions. So far the mechanism of Li conductivity could not be fully resolved.^{30,31} One reason was provided by a recent theoretical study where it was concluded that jump rates are not primarily limited by activation energies, but a combination of E_a and the availability of jump targets.³² Thus, E_a derived in temperature dependent experiments are merely effective parameters and cannot generally be interpreted as actual physical barriers of ion motion.

Inverting relaxation and diffusion data using an exponential kernel instead of fitting it with a particular model has become a routine tool in NMR.^{33–35} However, the common regularization with a non-negativity constraint is not physically justified once exchange processes become relevant for the dynamics of a spin system.^{36–40} Amorphous and multisite crystalline solid-state systems are affected in particular due to their highly branched interaction network,²⁸ which requires a different approach for data inversion. One suggestion was to analyze the data in the time domain, without actually inverting it.⁴⁰ Here, the applicability of uniform penalty (UP) regularization in combination with a penalty to prevent unnecessary oscillations⁴¹ is demonstrated for the inversion of solid-state NMR data. The suitability of the algorithm for averaging in a non-inverted dimension is shown, facilitating spectral separation of the static NMR spectrum with respect to the SAE time constant. Using this technique and supported by *ab initio* density functional theory (DFT) calculations, the dynamics of stoichiometric and chemically overlithiated LTO is investigated.

2 Methods

2.1 Sample preparation and characterization

Stoichiometric $\text{Li}_4\text{Ti}_5\text{O}_{12}$ was purchased from Sigma-Aldrich (>99%). $\text{Li}_{4+x}\text{Ti}_5\text{O}_{12}$ with $x \approx 1.6$ was prepared by dispersing 10 mmol of the commercial $\text{Li}_4\text{Ti}_5\text{O}_{12}$ in 30 ml hexane with subsequent slow addition of 2 ml of 11 M butyllithium (3 mmol). The color of the dispersion changed immediately from white to dark blue when adding the butyllithium. The dispersion was stirred for at least 24 hours, dried under vacuum,

washed three times with fresh hexane and then dried again. Complete transition of the Li from the butyllithium to the lithium titanate results in formation of $\text{Li}_{4+x}\text{Ti}_5\text{O}_{12}$ with $x \approx 1.6$. All sample preparation steps were done in a glove box under argon. A sample with a lower degree of lithiation ($x \approx 0.2$) was prepared in the same way, using 0.4 mmol butyllithium.

X-ray diffraction was measured in transmission mode with Cu K-alpha radiation (40 kV, 40 mA) with an Empyrean diffractometer (Panalytical, Netherlands) with the powder placed between two mylar foils. Microscopy was performed with a CM 20 transmission electron microscope (Philips, Netherlands) operated at 200 kV. In the glovebox the powder was placed on lacey carbon grids which were sealed in aluminium foil for transport. The bags were opened, the grids were placed in the holder and the holder was inserted into the TEM to minimize the exposure of the samples to air (max. 1 minute). PowderCell (Bundesanstalt für Materialforschung und prüfung)⁴² was used to simulate diffraction patterns for stoichiometric LTO (ICSD 160655) and fully overlithiated LTO ($x = 3$, ICSD 160655 but Li on 16c).

2.2 NMR spectroscopy

All NMR measurements were recorded on a Bruker AVANCE III HD 400 spectrometer at a ^7Li frequency of $\omega_0/2\pi = 155.5$ MHz.

SAE NMR employs the Jeener–Broekaert pulse sequence $\beta_1 - t_p - \beta_2 - t_m - \beta_3 - t_d$, where β represents radio frequency pulses, t_p is the evolution time, t_m the mixing time and t_d the detection transient.⁴³ It results in an echo with an intensity relative to the correlation between the quadrupolar precession frequency ω_Q during the evolution time and during the detection transient at time t_m later. A correlation function can be mapped directly by repeating this sequence with variable t_m if the correlation time constant, τ_C , is shorter than the spin–lattice relaxation with time constant T_1 , the decay of quadrupolar order with time constant T_{1Q} , and temperature-independent spin diffusion processes.²⁷ SAE NMR measurements of stoichiometric and overlithiated LTO were recorded at different temperatures between 10 °C and 45 °C using a 32 step phase cycle⁴⁴ and a fixed evolution time t_p of 10 μs . A saturation pulse train and a suitable delay time were used between measurements to ensure consistent initial conditions. In all the experiments with a static sample, 90°-pulse lengths were around 6.5 μs . The sample temperature was controlled by a Bruker BCU-20



cooling unit and was recorded using a Bruker B-SVT system. The temperature was stable within ± 1 K. The reported temperatures are averaged values over the experiment time.

T_1 of the overlithiated samples was measured spectrally resolved using the saturation recovery (SR) experiment with magic angle sample spinning (MAS). For this experiment the 90° -pulse duration was 1.1 μ s and the 1.3 mm rotor was set to a speed of 65 kHz. The sample temperature was controlled with a flow of heated nitrogen.

2.3 NMR data analysis

A distribution of τ_c from SAE experiments and of T_1 from SR experiments is obtained using regularized inversion with UP regularization in combination with a penalty for zero crossing of the density function to prevent it from exhibiting unnecessary oscillations by minimizing the number of sign changes. At the same time, neither sign of the density function amplitude is preferred over the other.⁴¹

The spectral NMR information contained in the SAE¹³ and in the SR experiments are obtained by Fourier transformation of the transient echo signal and the free induction decay, respectively. Since a spectral density in the inverted dimension is determined from the echo decay as a function of t_m rather than fitting a particular τ_c or T_1 to the data, the NMR spectrum corresponding to different τ_c and T_1 can be obtained in a second dimension that is contained in the transiently recorded data already. This facilitates the independent mobility characterization of ions in different lattice sites or with different local environments whose spectrum and correlation time both vary considerably. Although the data is inverted in one dimension only, the full two-dimensional data set for T_1 and the full three-dimensional data set for τ_c are used when performing the regularized inversion. In the spectral and in the (inverse) temperature dimension, a unity kernel is employed, hence regularization acts as a smoothing filter along the non-inverted dimensions. The advantage compared to the application of smoothing after inversion of independent one-dimensional data sets is that an algorithm acting on multi-dimensional data leads to potentially narrower features along the inverted dimension since the sensitivity-enhancing smoothing is performed simultaneously with data inversion.⁴⁵

The regularization parameters for the inversion have been chosen as detailed in ref. 41.

2.4 Computational details of DFT simulations

To approximate the occupational disorder of $\text{Li}_4\text{Ti}_5\text{O}_{12}$, the stoichiometric representation $\text{Li}_8\text{Ti}_{10}\text{O}_{24}$ (space group $R\bar{3}m$) was studied. All possible occupations of the unit cell reduce to six symmetry-inequivalent structures similar in total energy, shown in Fig. 1. The geometry of the six unit cells was optimized with CASTEP 7.01 (ref. 46) using the default ultra-soft, on-the-fly-generated pseudo-potentials and the PBE exchange–correlation functional. The forces were converged to 3 meV with a cut-off energy of 600 eV and a k -point grid of $4 \times 4 \times 2$.

The quadrupolar coupling constants C_Q for the optimized geometries were calculated with CASTEP 8.0,⁴⁶ the default ultra-

soft, on-the-fly-generated pseudo-potentials, and the LDA exchange–correlation functional. For the structure with minimum energy (supercell a), the convergence criterion of 0.1 kHz for C_Q was met with a cut-off energy of 1.3 keV and a k -point grid of $8 \times 8 \times 4$, which was adopted for the calculation of the C_Q of the other LTO unit cells. Modifications in the pseudo-potentials (especially in the Li pseudo-potential) resulted in changes of up to 25 kHz for the absolute value of C_Q in supercell a, whereas the replacement of the LDA exchange–correlation functional with PBE only yielded negligible changes of up to 0.5 kHz.

3 Results

The X-ray diffractograms of the prepared samples (Fig. 2a) are consistent with literature.^{17,22} While they do not allow

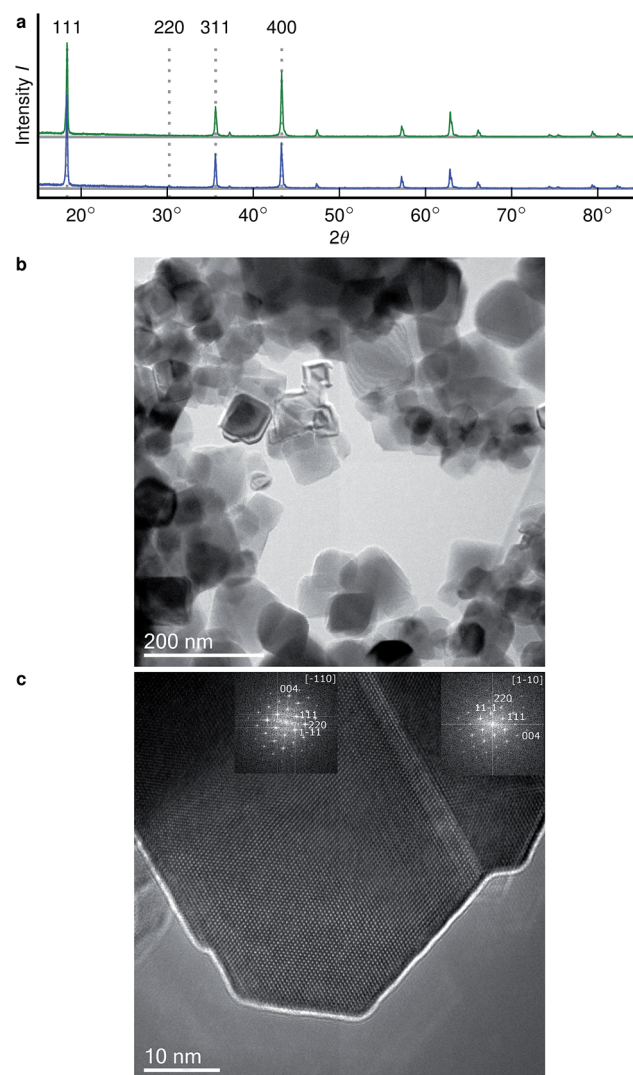


Fig. 2 (a) X-ray diffractograms of stoichiometric (blue) and overlithiated (green) LTO ($x \approx 1.6$), scaled to the 111 reflection, with reflection positions (dotted lines) from simulations. (b) TEM image of overlithiated LTO, showing a grain size of less than 100 nm. (c) HRTEM image of overlithiated LTO showing different crystallite orientations in one grain.



a quantification of Li content, they are qualitatively in agreement with simulations as I_{311}/I_{111} increases, I_{400}/I_{111} decreases and I_{220} almost disappears with overlithiation. The average grain sizes of the product as well as the educt are below 100 nm (Fig. 2b) with different crystallite orientations per grain (Fig. 2c).

Fig. 3 shows the spectrally resolved density of the SAE correlation time constant τ_c at different temperatures. Individual spectra for selected τ_c are shown in Fig. 4.

3.1 Stoichiometric LTO

For stoichiometric LTO (Fig. 3a) the pattern of the spectrally resolved correlation time density is similar at all temperatures. However, a temperature increase does not lead to a simple shift of these patterns, as would be expected for dynamic processes following an Arrhenius law with a single E_a .¹² Instead, fast processes are almost temperature independent, indicating a small E_a , while temperature dependence is increasing for slower processes, suggesting a higher E_a .

Signal components with a negative amplitude, which proved to be necessary for an accurate fit of the data, can be observed at $\tau_c \approx 10 \mu\text{s}$ and off-center in the spectral dimension on both sides of the main signal components along the whole τ_c axis. The former might result from spin-spin (T_2) relaxation effects, allowing unwanted coherences to contribute to the NMR signal.⁴⁴ Hence the signal decay may contain some Gaussian contribution. Inverting a Gaussian function with an exponential kernel leads to signal contributions with negative amplitude. The origin of the latter component cannot be identified unequivocally. One possibility could be relaxation induced

violations of coherence transfer selection rules, which could lead to such negative amplitudes on either side of a resonance.⁴⁷

The change of the spectral features as a function of τ_c is quite pronounced. Although broadened, the spectra display the pattern expected for quadrupolar interactions of a spin 3/2 nucleus (Fig. 4a). With the exception of the fastest correlation times probed, the width of these features exceeds τ_c^{-1} , hence it is unlikely that processes exhibiting a correlation time τ_c are the cause for this line narrowing. We can thus assume that the width of the spectra represents the averaged magnitude of the EFG seen by the signal-inducing nuclei and that an estimate of the quadrupolar interaction is possible. Since no reference data of quadrupolar coupling constants of ^7Li ions in LTO are available, *ab initio* calculations were performed to estimate EFG values at lattice sites occupied by Li^+ . Because such a calculation needs to consider the stochastic occupancy of the 16d sites in LTO even in the absence of defects, a set of supercells with systematic variation of Li and Ti on 16d sites has been utilized (Fig. 1). Simulated C_Q values for the six different unit cells are summarized in Table 1.

3.2 Overlithiated LTO

A chemically overlithiated sample was used to study the impact of electronic defects, such as polaronic Ti^{3+} states, on the Li mobility in LTO. In Fig. 3b the correlation between τ_c and the static NMR spectrum is shown for overlithiated LTO. The general trends and patterns are similar to the stoichiometric LTO, but τ_c of the dominant signal components are about two orders of magnitude shorter and the spectra are considerably broader. A quadrupolar origin of the line broadening is

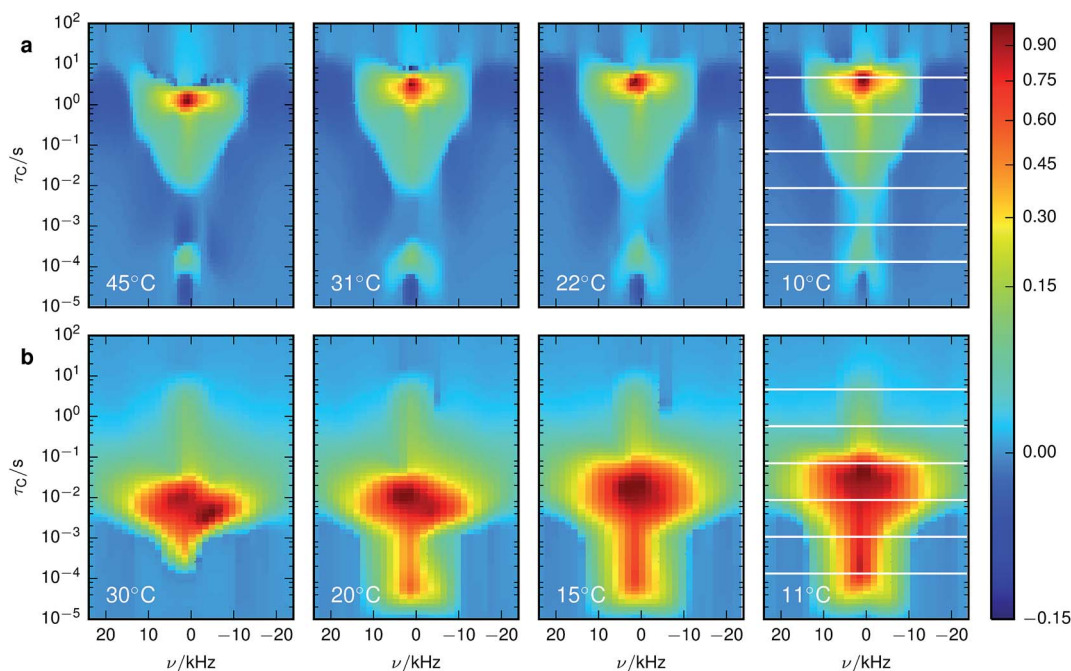


Fig. 3 Inversion of ^7Li SAE spectra recorded at different temperatures for (a) stoichiometric and (b) overlithiated LTO. The plots show the density of the correlation time τ_c from relatively fast processes (small τ_c) to very slow processes (large τ_c). The spectral dimension facilitates the individual NMR lineshape analysis of Li species with different mobilities. The white lines in the lowest temperature figures identify the slices shown in Fig. 4.



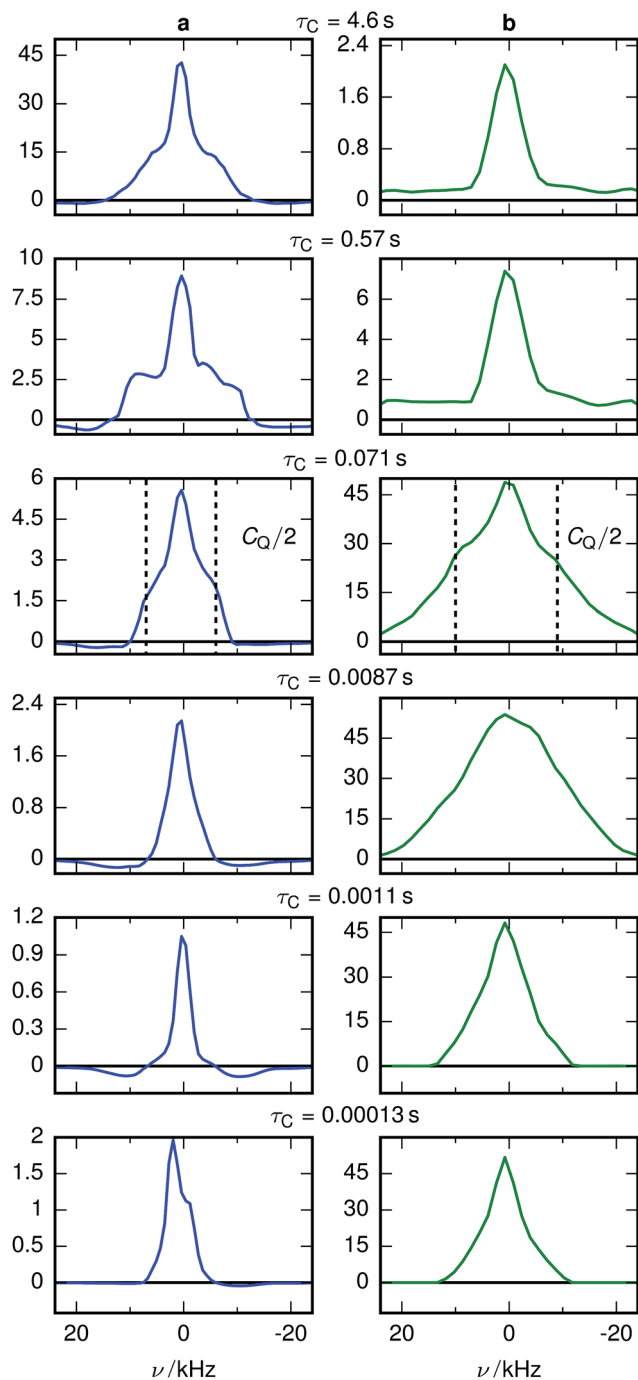


Fig. 4 Selected ^7Li SAE spectra of (a) stoichiometric LTO at 10 °C and (b) overlithiated LTO at 11 °C. The spectra for $\tau_C = 0.071$ s show how the quadrupolar coupling constant C_Q can be extracted from the shoulders of a spin 3/2 powder NMR spectrum.

supported by the shape of the spectra, which again show – albeit additionally broadened – features as expected for static quadrupolar spectra of spin 3/2 nuclei (Fig. 4b).

It can be seen that a fraction of the overlithiated LTO shows a signal with similar τ_C as the stoichiometric LTO. This is expected for two-phase formation upon overlithiation.^{14–16} However, the signal fraction exhibiting such a reduced mobility in overlithiated LTO is smaller than the fraction of

Table 1 Summary of theoretically simulated quadrupolar coupling constants C_Q/kHz for the symmetry-inequivalent Li positions in six different $\text{Li}_8\text{Ti}_{10}\text{O}_{24}$ supercells (Fig. 1a–f). The simulated values yield an order of magnitude estimate of the microscopic values for C_Q of Li in LTO. The influence of different computational parameters introduces an additional uncertainty of up to 25 kHz

Li position	a	b	c	d	e	f
8a	61.3	62.7	14.4	46.6	285.4	280.6
8a	61.3	95.1	207.0	118.5	18.5	280.6
8a	16.2	95.1	204.8	118.7	288.1	14.6
8a	84.2	61.3	12.1	46.2	300.8	350.2
8a	83.7	160.3	238.8	146.9	32.0	350.6
8a	16.0	160.2	237.3	146.7	277.9	14.6
16d	34.1	71.5	36.2	54.1	99.2	145.0
16d	70.7	67.8	33.3	54.3	68.6	144.9

stoichiometric LTO if a strict two-phase separation according to $\text{Li}_{4+x}\text{Ti}_5\text{O}_{12} = (1 - x/3)\text{Li}_4\text{Ti}_5\text{O}_{12} + (x/3)\text{Li}_7\text{Ti}_5\text{O}_{12}$ is assumed.²² To distinguish different resonances, the spectrally resolved distribution of spin–lattice relaxation times T_1 of overlithiated LTO using an SR experiment with MAS was determined (Fig. 5). Two different spectral features are observed: a set of poorly resolved resonances with different T_1 at about 0 ppm (regions A–C) and a broad line centered at about –10 ppm (region D). The frequencies of the former are overlapping with the resonances observed in stoichiometric LTO.¹⁹ The latter is due to the presence of paramagnetic Ti^{3+} .⁴⁸ The spectral separation is likely caused by the formation of different phases rather than a solid solution upon chemical overlithiation. This is in agreement with microscopy results,¹⁵ where clear boundaries between overlithiated and stoichiometric phases were observed. Nonetheless, both signals show a short relaxation component for $100 \text{ ms} \leq T_1 \leq 1 \text{ s}$ (regions B and D). This is considerably shorter than T_1 of stoichiometric LTO, whose projected distribution is shown in Fig. 5, and is indicative of Li ions in the vicinity of paramagnetic Ti^{3+} .

The resonances at 0 ppm show additional clearly distinguished relaxation components. The one at $T_1 \approx 10 \text{ s}$ (region A), which is only moderately reduced compared to T_1 of stoichiometric LTO, could be explained by some Li^+ exchange with overlithiated phases, yet considerably reduced compared to the above-mentioned component with fast T_1 . Alternatively, such an increase could be caused by a variation of Li ion mobility, without the presence of paramagnetic centers in the region sampled by a Li ion. Either way, the reduction of T_1 shows that these phases are not macroscopically separated due to non-uniform sample overlithiation, which would cause a contribution with identical T_1 as in stoichiometric LTO. It also indicates that there is some heterogeneity in the distribution of mobility or size of the phases, otherwise a continuous distribution of T_1 would be expected. Finally, the component at $T_1 \approx 20 \text{ ms}$ (region C) is rather unusual. It does not show a considerable chemical shift, and it is in the immediate neighborhood of a peak with negative sign. It is likely that both peaks are caused by exchange, since we know from the SAE that corresponding mobility processes are taking place.



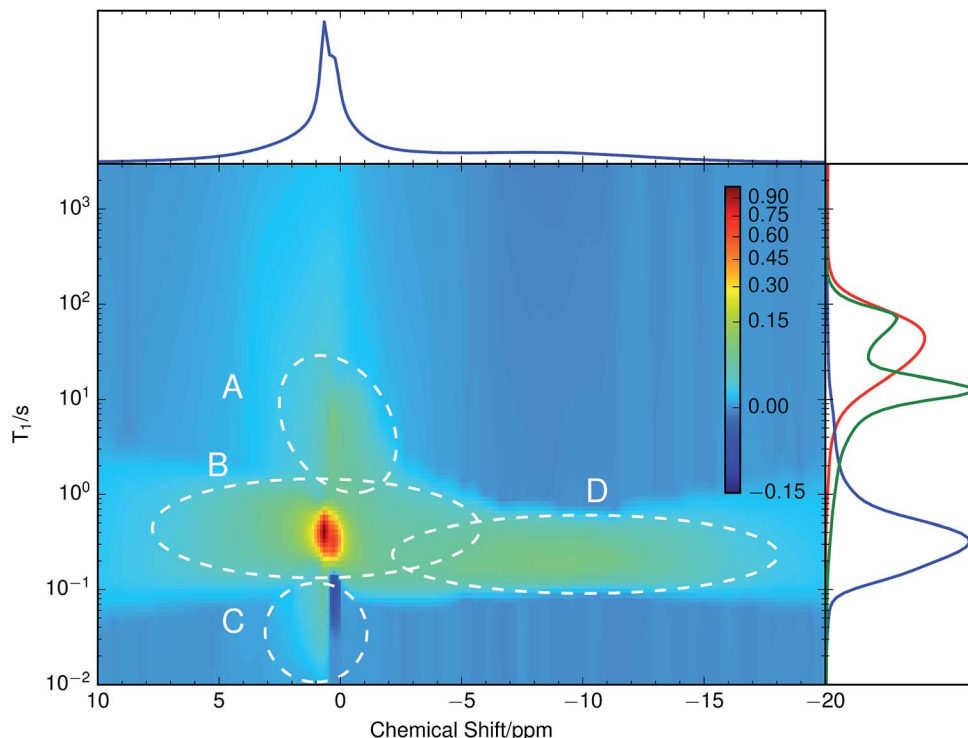


Fig. 5 Inversion of an ^7Li MAS saturation recovery experiment on overlithiated LTO. The broad spectral feature at -10 ppm shows a completely different T_1 distribution to the rest of the spectrum. Overlaid with the sum projection of T_1 (blue) is the T_1 distribution of less overlithiated LTO (green) recorded in the same way and stoichiometric LTO recorded without MAS (red). Different regions are marked with dashed ellipses and labeled with capital letters for simpler identification.

Overlithiation in the limit of small x was probed using a sample with $x \approx 0.2$. This sample does not show a feature around -10 ppm and the resonances around 0 ppm are much narrower than for $x \approx 1.6$ and even slightly narrower than for $x = 0$, consistent with data shown by Schmidt *et al.*¹³ Its T_1 distribution, shown in the side panel of Fig. 5 (green curve) consists of two clearly separated peaks at $T_1 \approx 80$ s and $T_1 \approx 10$ s as well as a long, low tail towards shorter relaxation times. The peak at longer T_1 coincides with the long T_1 edge of the stoichiometric LTO. The peak with shorter T_1 is somewhat reduced compared to the edge at short T_1 of the stoichiometric LTO, which would be consistent with a T_1 reduction due to accelerated motion,¹³ but not with the considerable relaxivity enhancement induced by paramagnetic Ti^{3+} . This latter effect is likely responsible for the long, weak tail towards short T_1 , which shows the onset of the features observed for the quickly relaxing signals (including the negative signal in region C) of the sample with $x \approx 1.6$.

4 Discussion

4.1 Mobility modes of Li ions

Experimentally observed (~ 10 – 40 kHz) and theoretically simulated (~ 20 – 300 kHz) C_Q values differ by a factor of between two and eight. Even though the first-principles simulated values show a rather large methodical error of up to 25 kHz, the differences cannot be attributed to this methodical error alone. In particular, the simulated values systematically overestimate

experimental values. In contrast to the common way of interpretation, the experimentally observed C_Q might not result from microscopic, local EFGs on individual Li sites. Instead, consistent with molecular dynamics simulations,¹⁹ this suggests microscopic Li hopping between a limited number of sites on a much shorter timescale than the experimentally accessible timescale of $\sim 10^{-5}$ s, causing a partial, anisotropic averaging of the individual EFGs. This results in an experimentally observed residual quadrupolar coupling,^{49–51} which is illustrated in Fig. 6. Notice that at $\tau_C \geq 10$ s the spectrum gets considerably broader, more consistent with the values obtained for C_Q from simulations. Considering the distribution of the spin–lattice relaxation time constant T_1 shown in the side panel of Fig. 5, it is likely that this signal contribution with long τ_C is caused by immobile Li ions that are relaxing with the relaxation time constant of quadrupolar order, $T_{1Q} \approx T_1/3$, in an SAE experiment.²⁸

Similar averaging effects, yet more pronounced due to the observed sharp quadrupolar pattern, have been found for fast ionic conductors.⁵² For LTO, this implies that to quantify ion mobility, two intrinsically different influences need to be considered – fast local mobility leading to the observation of residual quadrupolar coupling, and slower long-range mobility over larger distances between local domains, which gets probed by SAE NMR.

Since isotropic chemical shifts of Li in diamagnetic environments are distributed over a frequency range that is considerably narrower than typical values of C_Q , such fast local mobility that causes a narrowing of quadrupolar patterns would



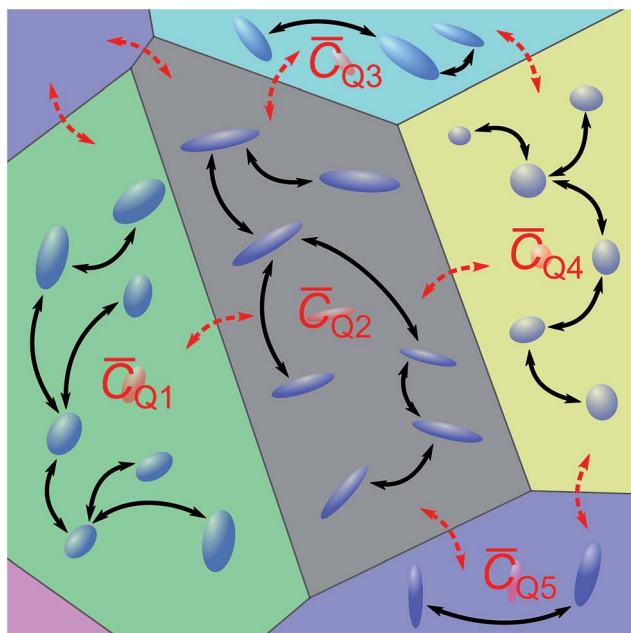


Fig. 6 Illustration of our suggested model of Li mobility. Li ions perform quick microscopic jumps (black solid arrows) between sites with different EFGs (blue ellipsoids) within a domain. Since these jumps are faster than the timescale probed by SAE NMR, the measured hopping rate describes movements between the domains (red dashed arrows) with different averaged residual EFGs (red ellipsoids).

also lead to an averaging of the isotropic chemical shift among the sites that form a local mobility domain in an experiment with MAS. Hence the conventional interpretation of isotropic^{6,7} Li chemical shifts of LTO in terms of static Li occupancy of certain crystallographic sites^{20,22,53} could be incomplete or even unsuitable, and discrepancies of site populations between NMR and other techniques would be a consequence.¹⁹

4.2 Incorporation of additional Li by overlithiation

The observed differences in the SAE NMR spectrum between the stoichiometric and the overlithiated LTO sample (Fig. 3 and 4) arise from the presence of paramagnetic centers generated upon incorporation of additional Li⁺ into LTO, which is charge-compensated primarily by reduction of diamagnetic Ti⁴⁺ to paramagnetic Ti³⁺. A high local concentration of Ti³⁺ ions causes a paramagnetic shift or a Knight shift and induces a considerable line broadening due to reduced T_2 relaxation time constants.⁴⁸ Furthermore, both Ti³⁺ as well as the additionally incorporated Li⁺ could change the EFG with a corresponding alteration of C_Q . The increased mobility of Li ions in the overlithiated LTO, which is reflected by the reduced τ_c , can be linked directly with their vicinity to reduced Ti³⁺ centers. Notice that τ_c for overlithiated LTO may also be affected by polaronic hopping of an electron between Ti ions rather than motion of the Li ion itself. Hence care must be taken when attempting a quantitative analysis of SAE experiments with potentially non-stationary paramagnetic centers.

A possible explanation for the increased average EFG probed by C_Q could be the presence of the additionally incorporated Li

ions and a shorter average distance to the titanium due to a smaller repulsion caused by the reduced nominal Ti charge. This makes it easier for Li to approach Ti ions, thereby also speeding up ion transport. Alternatively, an increased average EFG may also be caused by smaller local domains, which would show poorer averaging.

A trend observed for stoichiometric as well as overlithiated LTO is the triangular shape of the spectrally resolved τ_c pattern, which is narrowing towards shorter τ_c . Assuming that better averaging of the quadrupolar interaction is obtained for locally sampled domains with a larger number of sites, then this pattern would indicate that local mobility dispersed over more sites also causes faster motion between different domains. In other words, the more restricted the local mobility, the slower is the global mobility. An explanation could be that larger local domains also offer more anchors for jumps out of a domain. With more available jumping targets, *i.e.* Li vacancies or interstitial sites, the probability of a jump increases and τ_c decreases, as observed. Alternatively, such an improved averaging could also be explained by poorer ordering within local domains, causing smaller residual quadrupolar couplings.

In the T_1 distribution shown in Fig. 5, region B is clearly affected by paramagnetic centers, which would contradict the two-phase model. A possible explanation could be densely entangled overlithiated and stoichiometric phases of small dimensions, which is consistent with data showing an exchange time constant of $\tau \approx 2$ ms between the resonances.²² This is two to three orders of magnitude shorter than T_1 found in the distribution. Hence an equalization of T_1 is realistic for the majority of the two phases. An alternative interpretation could be a displacement of phase boundaries by simultaneous Li motion and polaronic electron hopping between neighboring Ti ions. However, such a model is incompatible with an observation of two-phase separation by microscopy techniques,¹⁵ which requires a much longer lifetime for phase boundaries to be detectable.

An explanation for the apparent discrepancy with results in the literature that suggest the formation of a solid solution upon overlithiation¹³ can be deduced from the T_1 experiment with the sample at $x \approx 0.2$. In this case only a very minor fraction of the Li is influenced by Ti³⁺, while a considerable fraction appears to show a slightly accelerated T_1 that would be consistent with an increased Li ion mobility. If charge of the additionally incorporated Li⁺ ions is not compensated by reduction of Ti⁴⁺ to Ti³⁺, then it is conceivable that in the early stages of overlithiation the additional Li may be charge-compensated by removing oxygen atoms close to the grain surfaces. Since LTO is not an oxygen conductor at room temperature, initially a core-shell structure would be formed with the additional Li incorporated in the shell, possibly in the form of a solid solution. Ti⁴⁺ reduction would set in as soon as the surface regions of the LTO are oxygen depleted, leading to the two-phase configuration suggested above. From the overlap of T_1 of region A in Fig. 5 and the slightly accelerated T_1 component of the sample with $x \approx 0.2$, it seems possible that such a core-shell configuration, but with a considerably reduced shell volume, is maintained in the sample with $x \approx 1.6$.



To quantitatively understand the evolution of the T_1 distribution, further experiments with a larger number of different overlithiation steps and a direct quantification of Ti^{3+} by electron paramagnetic resonance⁴⁰ will be necessary.

5 Conclusions

A novel analysis technique for the inversion of solid-state NMR relaxation and SAE data was used to qualitatively study the mobility of Li ions in stoichiometric and chemically overlithiated LTO. Such an analysis facilitates, in analogy to established liquid-state NMR techniques, the separation of static or MAS NMR spectra into different components according to their T_1 or their τ_c . By employing an algorithm that does not depend on a non-negativity constraint, it is not necessary to assume that, for example, no exchange is taking place between different signal contributions. For the datasets shown in this work, the negative components proved to be necessary for a good fit to the experimental data. Although this method cannot be implemented as computationally efficient as the non-negativity constrained Tikhonov regularization,³⁶ it is still possible to use it for two- and even three-dimensional inversion problems.

For LTO it was found that the 7Li NMR spectra show a pronounced τ_c dependence. From the discrepancy between experimentally observed quadrupolar couplings and numerical simulations it was concluded that fast local mobility of lithium ions between a limited number of sites is taking place and that the observed coupling constants represent residual quadrupolar couplings. Such a hypothesis also implies that resonances at different isotropic chemical shifts, as observed by MAS NMR experiments, may not be caused by static occupation of certain crystallographic sites. Furthermore, this means that SAE NMR is not suitable to directly quantify long-range ion motion in LTO as long as the size of the local domains is not known. Even NMR relaxation time measurements need to be assessed critically for their suitability for such a quantification, since multiple relaxation modes can be expected, which are potentially difficult to disentangle or for which it is not necessarily clear whether relaxation is dominated by long-range or short-range motion. However, effective parameters from NMR relaxation or SAE experiments may be well suited to compare differently synthesized samples of the same material or systematic material variations, for example by doping or variation of the stoichiometry.

Different contributions to the spectrally resolved SAE distribution show different temperature dependence, hence Li mobility cannot be described by a single activation energy or a small number of activation energies for jumps between particular crystallographic sites. Instead it is necessary to consider the stochastically occupied local environment of ions, as was predicted theoretically by DFT simulations.³² Our results indicate that it is not sufficient to simulate unit cells or small supercells with periodic boundary conditions accessible by DFT calculations, but that an intrinsically multiscale simulation approach is required to cover local domains showing enhanced Li mobility as well as jumps between such domains.

For a more conclusive interpretation of the observed chemical shift values and time constant distributions, a refinement of simulations as well as additional spectroscopic and imaging experiments will be needed. In particular, atomistic as well as systematically coarse-grained simulations capable of capturing the essential dynamical processes of extended sample volumes appear promising, since the observed features in the relaxation time distribution indicate that relevant volume sizes even for the description of the two-phase behavior of overlithiated LTO could be within reach of current multiscale simulation methods. Preliminary results from simple kinetic Monte Carlo simulations with a single rate constant³² and randomized quadrupolar frequency distribution support the hypothesis of an averaging process on a timescale smaller than experimentally accessible (approx. 10^{-5} s). Expanding the configurations (Fig. 1) sampled for quadrupolar frequencies by Li-16c defect structures results in a kinetically averaged C_Q much closer to experimental values.

Acknowledgements

We are grateful to Dr Peter Jakes and Steffen Kayser, M.Sc. of Forschungszentrum Jülich, Andreas Garhammer, B.Sc. and Hendrik Heenen, M.Sc. of Technische Universität München, and Dr Saskia Stegmaier of SUNCAT, SLAC for their technical assistance and fruitful discussions. Funding from the German Federal Ministry of Education and Research (BMBF project DESIREE, grant number 03SF0477A) is gratefully acknowledged.

References

- 1 M. V. Reddy, G. V. Subba Rao and B. V. R. Chowdari, *Chem. Rev.*, 2013, **113**, 5364–5457.
- 2 X. Sun, P. V. Radovanovic and B. Cui, *New J. Chem.*, 2015, **39**, 38–63.
- 3 Z. Yang, D. Choi, S. Kerisit, K. M. Rosso, D. Wang, J. Zhang, G. Graff and J. Liu, *J. Power Sources*, 2009, **192**, 588–598.
- 4 C. Sandhya, B. John and C. Gouri, *Ionics*, 2014, **20**, 601–620.
- 5 C. P. Grey and N. Dupré, *Chem. Rev.*, 2004, **104**, 4493–4512.
- 6 A. Deschanvres, B. Raveau and Z. Sekkal, *Mater. Res. Bull.*, 1971, **6**, 699–704.
- 7 Y.-B. He, M. Liu, Z.-D. Huang, B. Zhang, Y. Yu, B. Li, F. Kang and J.-K. Kim, *J. Power Sources*, 2013, **239**, 269–276.
- 8 Z. Chen, I. Belharouak, Y.-K. Sun and K. Amine, *Adv. Funct. Mater.*, 2012, **23**, 959–969.
- 9 T. Ohzuku, A. Ueda and N. Yamamoto, *J. Electrochem. Soc.*, 1995, **142**, 1431–1435.
- 10 P. Jakes, J. Granwehr, H. Kungl and R.-A. Eichel, *Z. Phys. Chem.*, 2015, **229**, 1439–1450.
- 11 I. Leonidov, O. Leonidova, L. Perelyaeva, R. Samigullina, S. Kovyazina and M. Patrakeev, *Phys. Solid State*, 2003, **45**, 2183–2188.
- 12 M. Wilkening, R. Amade, W. Iwaniak and P. Heitjans, *Phys. Chem. Chem. Phys.*, 2007, **9**, 1239.
- 13 W. Schmidt, P. Bottke, M. Sternad, P. Gollob, V. Hennige and M. Wilkening, *Chem. Mater.*, 2015, **27**, 1740–1750.



- 14 S. Scharner, W. Weppner and P. Schmid-Beurmann, *J. Electrochem. Soc.*, 1999, **146**, 857–861.
- 15 M. Kitta, T. Akita, S. Tanaka and M. Kohyama, *J. Power Sources*, 2014, **257**, 120–125.
- 16 D. Safronov, S. Novikova, A. Skundin and A. Yaroslavl'tsev, *Inorg. Mater.*, 2012, **48**, 57–61.
- 17 L. Aldon, P. Kubiak, M. Womes, J. Jumas, J. Olivier-Fourcade, J. Tirado, J. Corredor and C. Pérez Vicente, *Chem. Mater.*, 2004, **16**, 5721–5725.
- 18 J. Qiu, C. Lai, E. Gray, S. Li, S. Qiu, E. Strounina, C. Sun, H. Zhao and S. Zhang, *J. Mater. Chem. A*, 2014, **2**, 6353–6358.
- 19 M. Vijayakumar, S. Kerisit, K. M. Rosso, S. D. Burton, J. A. Sears, Z. Yang, G. L. Graff, J. Liu and J. Hu, *J. Power Sources*, 2011, **196**, 2211–2220.
- 20 P. Krtil, J. Dědeček, T. Kostlánová and J. Brus, *Electrochem. Solid-State Lett.*, 2004, **7**, A163–A166.
- 21 W. Schmidt and M. Wilkening, *J. Phys. Chem. C*, 2016, **120**, 11372–11381.
- 22 H. Hain, M. Scheuermann, R. Heinzmann, L. Wünsche, H. Hahn and S. Indris, *Solid State Nucl. Magn. Reson.*, 2012, **42**, 9–16.
- 23 W. K. Pang, V. K. Peterson, N. Sharma, J.-J. Shiu and S.-h. Wu, *Chem. Mater.*, 2014, **26**, 2318–2326.
- 24 X. Lu, L. Gu, Y.-S. Hu, H.-C. Chiu, H. Li, G. P. Demopoulos and L. Chen, *J. Am. Chem. Soc.*, 2015, **137**, 1581–1586.
- 25 A. Laumann, H. Boysen, M. Bremholm, K. T. Fehr, M. Hoelzel and M. Holzapfel, *Chem. Mater.*, 2011, **23**, 2753–2759.
- 26 N. Takami, K. Hoshina and H. Inagaki, *J. Electrochem. Soc.*, 2011, **158**, A725–A730.
- 27 A. Kuhn, V. Epp, G. Schmidt, S. Narayanan, V. Thangadurai and M. Wilkening, *J. Phys.: Condens. Matter*, 2012, **24**, 035901.
- 28 R. Böhmer, K. Jeffrey and M. Vogel, *Prog. Nucl. Magn. Reson. Spectrosc.*, 2007, **50**, 87–174.
- 29 G. Vitiņš, G. Kizane, A. Lūsis and J. Tīliks, *J. Solid State Electrochem.*, 2002, **6**, 311–319.
- 30 B. Ruprecht, M. Wilkening, R. Uecker and P. Heitjans, *Phys. Chem. Chem. Phys.*, 2012, **14**, 11974.
- 31 M. Vijayakumar, S. Kerisit, Z. Yang, G. L. Graff, J. Liu, J. A. Sears, S. D. Burton, K. M. Rosso and J. Hu, *J. Phys. Chem. C*, 2009, **113**, 20108–20116.
- 32 B. Ziebarth, M. Klinsmann, T. Eckl and C. Elsässer, *Phys. Rev. B: Condens. Matter Mater. Phys.*, 2014, **89**, 174301.
- 33 G. Borgia, R. Brown and P. Fantazzini, *J. Magn. Reson.*, 1998, **132**, 65–77.
- 34 P. T. Callaghan, C. H. Arns, P. Galvosas, M. W. Hunter, Y. Qiao and K. E. Washburn, *Magn. Reson. Imaging*, 2007, **25**, 441–444.
- 35 A. Lupulescu, M. Kotecha and L. Frydman, *J. Am. Chem. Soc.*, 2003, **125**, 3376–3383.
- 36 L. Venkataramanan, Y. Song and M. Hurlimann, *IEEE Trans. Acoust., Speech, Signal Process.*, 2002, **50**, 1017–1026.
- 37 G. Bodenhausen and R. R. Ernst, *Mol. Phys.*, 1982, **47**, 319–328.
- 38 S. Rodts and D. Bytchenko, *J. Magn. Reson.*, 2010, **205**, 315–318.
- 39 P. Fantazzini, F. Galassi, V. Bortolotti, R. Brown and F. Vittur, *New J. Phys.*, 2011, **13**, 065007.
- 40 Y.-Q. Song, G. Carneiro, L. M. Schwartz and D. L. Johnson, *Phys. Rev. Lett.*, 2014, **113**, 235503.
- 41 J. Granwehr and P. J. Roberts, *J. Chem. Theory Comput.*, 2012, **8**, 3473–3482.
- 42 W. Kraus and G. Nolze, *J. Appl. Crystallogr.*, 1996, **29**, 301–303.
- 43 J. Jeener and P. Broekaert, *Phys. Rev.*, 1967, **157**, 232–240.
- 44 F. Qi, G. Diezemann, H. Böhm, J. Lambert and R. Böhmer, *J. Magn. Reson.*, 2004, **169**, 225–239.
- 45 M. Levitt, G. Bodenhausen and R. Ernst, *J. Magn. Reson.*, 1984, **58**, 462–472.
- 46 S. Clark, M. Segall, C. Pickard, P. Hasnip, M. Probert, K. Refson and M. Payne, *Z. Kristallogr.*, 2005, **220**, 567–570.
- 47 N. Müller, G. Bodenhausen and R. R. Ernst, *J. Magn. Reson.*, 1987, **75**, 297–334.
- 48 T. Kostlánová, J. Dědeček and P. Krtil, *Electrochim. Acta*, 2007, **52**, 1847–1856.
- 49 M. Vogel and E. Rössler, *J. Magn. Reson.*, 2000, **147**, 43–58.
- 50 M. Vogel, C. Brinkmann, H. Eckert and A. Heuer, *Solid State Nucl. Magn. Reson.*, 2002, **22**, 344–362.
- 51 S. C. Shekar, J. A. Tang and A. Jerschow, *Concepts Magn. Reson., Part A*, 2010, **36**, 362–387.
- 52 R. Bertermann and W. Müller-Warmuth, *Z. Naturforsch., A: Phys. Sci.*, 1998, **53**, 863–873.
- 53 M. Wagemaker, E. R. H. van Eck, A. P. M. Kentgens and F. M. Mulder, *J. Phys. Chem. B*, 2009, **113**, 224–230.

